

## Product datasheet for **TP324408L**

### ATP1B4 (NM\_012069) Human Recombinant Protein

#### Product data:

**Product Type:** Recombinant Proteins  
**Description:** Recombinant protein of human ATPase, (Na<sup>+</sup>)/K<sup>+</sup> transporting, beta 4 polypeptide (ATP1B4), transcript variant 2, 1 mg  
**Species:** Human  
**Expression Host:** HEK293T  
**Expression cDNA Clone or AA Sequence:** >RC224408 representing NM\_012069  
**Red**=Cloning site **Green**=Tags(s)

MRRQLRSRRAPSPFPYSYRYRLDDPDEANQNYLADEEEEEAEERVTWPKSEEEEEEEEEEEEEEEEEEE  
EEGQGQPTGNAWWQKLQIMSEYLWDPERRMFLARTGLILLIYFFFYASLAAVITLCMYTLFLTISPIYPT  
FTERVKPPGVMIRPFAHSLNFNFNVSEPDWQHVISLNGFLQGYNDSLQEEMNVDCPPGQYFIQDGNED  
EDKKACQFKRSFLKNCSGLEDPTFGYSTGQPCILLKMNRIVGRPELGDPVKVSKVQRGDENDIRISY  
YPESASFDLRYPYGYGLTHVNYTSPLVAMHFTDVVKNQAVPVQCQLKGGKGVINDRVINDRFVGRVIFTLN  
IET

**TRTRPLEQKLISEEDLAANDILDYKDDDDKV**

**Tag:** C-Myc/DDK  
**Predicted MW:** 40.9 kDa  
**Concentration:** >0.05 µg/µL as determined by microplate BCA method  
**Purity:** > 80% as determined by SDS-PAGE and Coomassie blue staining  
**Buffer:** 25 mM Tris-HCl, 100 mM glycine, pH 7.3, 10% glycerol  
**Preparation:** Recombinant protein was captured through anti-DDK affinity column followed by conventional chromatography steps.  
**Note:** For testing in cell culture applications, please filter before use. Note that you may experience some loss of protein during the filtration process.  
**Storage:** Store at -80°C.  
**Stability:** Stable for 12 months from the date of receipt of the product under proper storage and handling conditions. Avoid repeated freeze-thaw cycles.  
**RefSeq:** [NP\\_036201](#)



[View online >](#)

Locus ID: 23439

UniProt ID: [Q9UN42](#)

RefSeq Size: 3857

Cytogenetics: Xq24

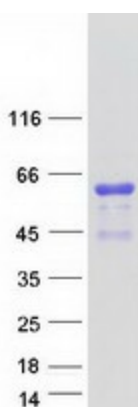
RefSeq ORF: 1059

**Summary:** This gene has been found in all vertebrate genomes sequenced to date. However, this gene has undergone a change in function in placental mammals compared to other species. Specifically, in fish, avian, and amphibian species, this gene encodes plasma membrane-bound beta-subunits of Na,K-ATPase. In placental mammals, the encoded protein interacts with the nuclear transcriptional coregulator SKIP and may be involved in the regulation of TGF-beta signaling. Two transcript variants encoding different isoforms have been found for this gene. [provided by RefSeq, Mar 2010]

**Protein Families:** Transmembrane

**Protein Pathways:** Cardiac muscle contraction

### Product images:



Coomassie blue staining of purified ATP1B4 protein (Cat# [TP324408]). The protein was produced from HEK293T cells transfected with ATP1B4 cDNA clone (Cat# [RC224408]) using MegaTran 2.0 (Cat# [TT210002]).