

Product datasheet for TP324408

ATP1B4 (NM_012069) Human Recombinant Protein

Product data:

Product Type:	Recombinant Proteins
Description:	Recombinant protein of human ATPase, (Na ⁺)/K ⁺ transporting, beta 4 polypeptide (ATP1B4), transcript variant 2, 20 µg
Species:	Human
Expression Host:	HEK293T
Expression cDNA Clone or AA Sequence:	>RC224408 representing NM_012069 Red =Cloning site Green =Tags(s)

MRRQLRSRRAPSPFPYSYRYRLDDPDEANQNYLADEEEEEAEERVTWPKSEEEEEEEKEEEEEEEKEE
EEGQGQPTGNAWWQKLQIMSEYLWDPERRMFLARTGLILLIYFFFYASLAAVITLCMYTLFLTISPIYPT
FTERVKPPGVMIRPFAHSLNFNFNVSEPDWQHVISLNGFLQGYNDSLQEEMNVDCPPGQYFIQDGNED
EDKKACQFKRSFLKNCSGLEDPTFGYSTGQPCILLKMNRIVGRPELGDPVKVSKVQRGDENDIRSISY
YPESASFDLRYPPYGGKLTHVNYTSPLVAMHFTDVVKNQAVPVQCQLKGGKGVINDRVINDRFVGRVIFTLN
IET

TRTRPLEQKLISEEDLAANDILDYKDDDDKV

Tag:	C-Myc/DDK
Predicted MW:	40.9 kDa
Concentration:	>0.05 µg/µL as determined by microplate BCA method
Purity:	> 80% as determined by SDS-PAGE and Coomassie blue staining
Buffer:	25 mM Tris-HCl, 100 mM glycine, pH 7.3, 10% glycerol
Preparation:	Recombinant protein was captured through anti-DDK affinity column followed by conventional chromatography steps.
Note:	For testing in cell culture applications, please filter before use. Note that you may experience some loss of protein during the filtration process.
Storage:	Store at -80°C.
Stability:	Stable for 12 months from the date of receipt of the product under proper storage and handling conditions. Avoid repeated freeze-thaw cycles.
RefSeq:	<u>NP_036201</u>



[View online »](#)

Locus ID: 23439

UniProt ID: [Q9UN42](#)

RefSeq Size: 3857

Cytogenetics: Xq24

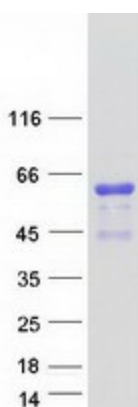
RefSeq ORF: 1059

Summary: This gene has been found in all vertebrate genomes sequenced to date. However, this gene has undergone a change in function in placental mammals compared to other species. Specifically, in fish, avian, and amphibian species, this gene encodes plasma membrane-bound beta-subunits of Na,K-ATPase. In placental mammals, the encoded protein interacts with the nuclear transcriptional coregulator SKIP and may be involved in the regulation of TGF-beta signaling. Two transcript variants encoding different isoforms have been found for this gene. [provided by RefSeq, Mar 2010]

Protein Families: Transmembrane

Protein Pathways: Cardiac muscle contraction

Product images:



Coomassie blue staining of purified ATP1B4 protein (Cat# TP324408). The protein was produced from HEK293T cells transfected with ATP1B4 cDNA clone (Cat# [RC224408]) using MegaTran 2.0 (Cat# [TT210002]).