

## Product datasheet for TP324406M

### VEGF Receptor 1 (FLT1) (NM\_002019) Human Recombinant Protein

#### Product data:

|                                       |  |
|---------------------------------------|--|
| Product Type:                         | Recombinant Proteins   |
| Description:                          | Recombinant protein of human fms-related tyrosine kinase 1 (vascular endothelial growth factor/vascular permeability factor receptor) (FLT1), 100 µg |
| Species:                              | Human  |
| Expression Host:                      | HEK293T  |
| Expression cDNA Clone or AA Sequence: | >RC224406 representing NM_002019<br>Red=Cloning site Green=Tags(s)   |

MVSYWDTGVLLCALLSCLLLTGSSSGSKLKDPELSLKGQTQHIMQAGQTLHLQCRGEAAHKWSLPEMVSKE  
SERLSITKSACGRNGKQFCSTLTLNTAQANHTGFYSCKYLAVPTSKKKETESAIYIFISDTGRPFVEMYS  
EIEPIIHMTEGRELVIPCRVTSPNITVTLKKFPLDPLPDGKRIIWDNRKGFISNATYKEIGLLTCEAT  
VNGHLYKTNLTHRQNTIIVQISTPRPVKLLRGHTLVLNCTATPLNTRVQMTWSYPDEKNKRASVRR  
RIDQSNSHANIFYSVLTIDKMQNKDKGLYTCRVRSGPSFKSVNTSVHIYDKAFITVKHRKQQVLETVAGK  
RSYRLSMKVKAFFPSPEVWVWLDGLPATEKSARYLTRGYSLLIKDVTEEDAGNYTILLSIKQSNVFNKLT  
TLIVNVKPKIYKAVSSFPDPALYPLGSRQILTCTAYGIPQPTIKWFWHPCNHNHSEARCDFCSNNEESF  
ILDADSNMGNRIESITQRMAIIEGKNKMASTLVADSRISGIYICIASNKVGTVGRNISFYITDVPNGFH  
VNLEKMPTEGEDLKLSTVNKFLYRDVTWILLRTVNNRTMHYSISKQKMAITKEHSITLNLTIMNVSLQD  
SGTYACRARNVYTGEEILQKKEITIRDQEAPYLLRNLSDHTVAISSSTLLDCHANGVPEPQITWFKNNHK  
IQQEPGIIILGPGSSTLFIERVTEEDGVYHCKATNQKGSVESSAYLTVQGTSDKSNLELITLTCTCVAAT  
LFWLLTLFIRKMKRSSEIKTDYLSIIMDPDEVPLDEQCERLPYDASKWFEFARERLKLKSLGRGAFGK  
VVQASAFGIKKSPTCRTVAVKMLKEGATASEYKALMTELKILTHIGHHLNVNLLGACTKQGGPLMVIVE  
YCKYGNLSNYLKSQRDLFFLNKDAALHMEPKKEKMEPGLEQGKKPRLDSVTSSESFASSGFQEDKSLSDV  
EEEESDGFYKEPITMEDLISYSFQVARGMEFLSSRKCIIHRDLAARNILLSENNVMKICDFGLARDIYKN  
PDYVRKGDTRLPLKWMAPESIFDKIYSTKSDVWSYGVLLWEIFSLGGSPYGPVQMDDEFCSRLREGMRMR  
APEYSTPEIYQIMLDCWHRDPKERPRFAELVEKLGDLLQANVQQDGKDYIPINAILTGNSGFTYSTPAFS  
EDFFKESISAPKFNSSGSSDDVRYVNAFKFMSLERIKTFEELLPNATSMFDDYQGDSTLLASPMLKRFTW  
TDSKPKASKIDLRVTSKSKESGLSDVSRPSFCHSSCGHVSEGKRRFTYDHAELERKIACCSPPPDYNSV  
VLYSTPPI

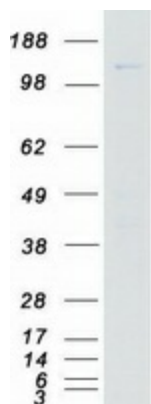
TRTRPLEQKLISEEDLAANDILDYKDDDDKV

|               |           |
|---------------|-----------|
| Tag:          | C-Myc/DDK |
| Predicted MW: | 148 kDa   |



[View online >](#)

|                          |   |
|--------------------------|---|
| <b>Concentration:</b>    | >0.05 µg/µL as determined by microplate BCA method  |
| <b>Purity:</b>           | > 80% as determined by SDS-PAGE and Coomassie blue staining   |
| <b>Buffer:</b>           | 25 mM Tris-HCl, 100 mM glycine, pH 7.3, 10% glycerol  |
| <b>Preparation:</b>      | Recombinant protein was captured through anti-DDK affinity column followed by conventional chromatography steps.  |
| <b>Note:</b>             | For testing in cell culture applications, please filter before use. Note that you may experience some loss of protein during the filtration process.  |
| <b>Storage:</b>          | Store at -80°C.   |
| <b>Stability:</b>        | Stable for 12 months from the date of receipt of the product under proper storage and handling conditions. Avoid repeated freeze-thaw cycles.   |
| <b>RefSeq:</b>           | <a href="#">NP_002010</a>   |
| <b>Locus ID:</b>         | 2321  |
| <b>UniProt ID:</b>       | <a href="#">P17948</a> , <a href="#">L7RSL3</a>   |
| <b>RefSeq Size:</b>      | 5777  |
| <b>Cytogenetics:</b>     | 13q12.3   |
| <b>RefSeq ORF:</b>       | 4014  |
| <b>Synonyms:</b>         | FLT; FLT-1; VEGFR-1; VEGFR1   |
| <b>Summary:</b>          | <p>This gene encodes a member of the vascular endothelial growth factor receptor (VEGFR) family. VEGFR family members are receptor tyrosine kinases (RTKs) which contain an extracellular ligand-binding region with seven immunoglobulin (Ig)-like domains, a transmembrane segment, and a tyrosine kinase (TK) domain within the cytoplasmic domain. This protein binds to VEGFR-A, VEGFR-B and placental growth factor and plays an important role in angiogenesis and vasculogenesis. Expression of this receptor is found in vascular endothelial cells, placental trophoblast cells and peripheral blood monocytes. Multiple transcript variants encoding different isoforms have been found for this gene. Isoforms include a full-length transmembrane receptor isoform and shortened, soluble isoforms. The soluble isoforms are associated with the onset of pre-eclampsia.[provided by RefSeq, May 2009]</p> |
| <b>Protein Families:</b> | Druggable Genome, Protein Kinase, Secreted Protein  |
| <b>Protein Pathways:</b> | Cytokine-cytokine receptor interaction, Endocytosis, Focal adhesion   |

**Product images:**

Coomassie blue staining of purified FLT1 protein (Cat# [TP324406]). The protein was produced from HEK293T cells transfected with FLT1 cDNA clone (Cat# [RC224406]) using MegaTran 2.0 (Cat# [TT210002]).