

## Product datasheet for TP324398

### ErbB 3 (ERBB3) (NM\_001005915) Human Recombinant Protein

#### Product data:

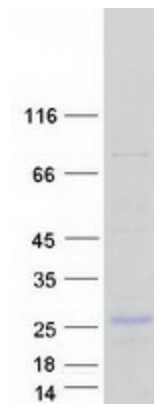
|                                       |  |
|---------------------------------------|--|
| Product Type:                         | Recombinant Proteins   |
| Description:                          | Recombinant protein of human v-erb-b2 erythroblastic leukemia viral oncogene homolog 3 (avian) (ERBB3), transcript variant s, 20 µg  |
| Species:                              | Human  |
| Expression Host:                      | HEK293T  |
| Expression cDNA Clone or AA Sequence: | >RC224398 representing NM_001005915<br><b>Red</b> =Cloning site <b>Green</b> =Tags(s)  |
|                                       | MRANDALQVLGILLFSLARGSEVGN SQAVCPGTLNGLSVTGD AENQYQTL YKLYERCEV MGNLEIVLTGH<br>NADLSFLQWIREVTGYVLVAMNEFSTLPLPNLRVVRGTQVYD GKF AIFVMLNYNTNSSHALRQLRLTQLT<br>GQFPMVPSGLTPQQAQDWYLLDDDPRLTLSASSKVPVTLAAV |
|                                       | <b>TR</b> TRPLEQKLISEEDLAANDILDYKDDDDKV  |
| Tag:                                  | C-Myc/DDK  |
| Predicted MW:                         | 18.1 kDa   |
| Concentration:                        | >0.05 µg/µL as determined by microplate BCA method   |
| Purity:                               | > 80% as determined by SDS-PAGE and Coomassie blue staining  |
| Buffer:                               | 25 mM Tris-HCl, 100 mM glycine, pH 7.3, 10% glycerol   |
| Preparation:                          | Recombinant protein was captured through anti-DDK affinity column followed by conventional chromatography steps.   |
| Note:                                 | For testing in cell culture applications, please filter before use. Note that you may experience some loss of protein during the filtration process.   |
| Storage:                              | Store at -80°C.  |
| Stability:                            | Stable for 12 months from the date of receipt of the product under proper storage and handling conditions. Avoid repeated freeze-thaw cycles.  |
| RefSeq:                               | <a href="#">NP_001005915</a>   |
| Locus ID:                             | 2065   |
| UniProt ID:                           | <a href="#">P21860</a>   |



[View online »](#)

|                   |  |
|-------------------|--|
| RefSeq Size:      | 1050   |
| Cytogenetics:     | 12q13.2  |
| RefSeq ORF:       | 549  |
| Synonyms:         | c-erbB-3; c-erbB3; ErbB-3; erbB3-S; FERLK; HER3; LCCS2; MDA-BF-1; p45-sErbB3; p85-sErbB3; p180-ErbB3   |
| Summary:          | <p>This gene encodes a member of the epidermal growth factor receptor (EGFR) family of receptor tyrosine kinases. This membrane-bound protein has a neuregulin binding domain but not an active kinase domain. It therefore can bind this ligand but not convey the signal into the cell through protein phosphorylation. However, it does form heterodimers with other EGF receptor family members which do have kinase activity. Heterodimerization leads to the activation of pathways which lead to cell proliferation or differentiation. Amplification of this gene and/or overexpression of its protein have been reported in numerous cancers, including prostate, bladder, and breast tumors. Alternate transcriptional splice variants encoding different isoforms have been characterized. One isoform lacks the intermembrane region and is secreted outside the cell. This form acts to modulate the activity of the membrane-bound form. Additional splice variants have also been reported, but they have not been thoroughly characterized. [provided by RefSeq, Jul 2008]</p> |
| Protein Families: | Adult stem cells, Druggable Genome, Protein Kinase, Secreted Protein, Stem cell - Pluripotency, Transmembrane  |
| Protein Pathways: | Calcium signaling pathway, Endocytosis, ErbB signaling pathway   |

### Product images:



Coomassie blue staining of purified ERBB3 protein (Cat# TP324398). The protein was produced from HEK293T cells transfected with ERBB3 cDNA clone (Cat# [RC224398]) using MegaTran 2.0 (Cat# [TT210002]).