

Product datasheet for TP324384L

ITIH2 (NM_002216) Human Recombinant Protein

Product data:

Product Type:	Recombinant Proteins
Description:	Recombinant protein of human inter-alpha (globulin) inhibitor H2 (ITIH2), 1 mg
Species:	Human
Expression Host:	HEK293T
Expression cDNA Clone or AA Sequence:	>RC224384 representing NM_002216 Red=Cloning site Green=Tags(s)

MKRLTCFFICFFLSEVSGFEIPINGLSEFVDYEDLVELAPGKFQQLVAENRRYQRSLPGESEEMMEEVDQV
 TLYSYKVQSTITSRMATTMIQSKVNNSPQPQNWFVDVQIPKGAFISNFSMTVDGKTRSSIKEKTVGRA
 LYAARAKGKTAGLVRSSALDMENFRTEVNVLPGAKVQFELHYQEVKWRKLGSEYHRIYLQPGRLAKHLE
 VDWWIEPQGLRFLHVPDTFEGHFDGVPVISKGQQKAHVSKPTVAQQRICPSCRETAVDGELVVLYDVK
 REEKAGELEVFNQYFVHFFAPDNLDPKIPKILFVIDVSGSMWGVKMKQTVEAMKTIKILDLRAEDHFSVID
 FNQNIPTWRNDLISATKTQVADAKRYIEKIQPSGGTNINEALLRAIFILNEANNLGLLDPNVSLIILVS
 DGDPTVGGELKLSKIQKNVKENIQDNISLFLSGMGFDVDYDFLKRSLNENHGIAQRIYGNQDTSQKPKFY
 NQVSTPLLRNVQFNYPHTSVTDVTQNNFHNYFGGSEIVVAGKFDPAKLDQIESVITATSANTQLVLETLA
 QMDDLQDFLSKDKHADPDFTRKLWAYLTINQLLAERSLAPTAALKRRITRSILQMSLDHHIVTPLTSLVI
 ENEAGDERMLADAPPQDPSCCSGALYYGSKVVPDSTPSWANPSPTPVISMALAQGSQVLESTPPPHVMRVE
 NDPHFIIYLPKSQKNICFNIDSEPGKILNLVSDPESGIVVNGQLVGAKKPNNGKLSYFGKLGFFYQSED
 IKIEISTETITLSHGSSFTSLSWSDTAQVTNQRVQISVKEKVVITLTKEMSFVLLHRVWKKHPVNVD
 FLGIYIPPTNKFSPKAHGLIGQFMQEPKIHIFNERPGKDPEKPEASMEVKGQKLIITRGLQKDYRTDLVF
 GTDVTCWFVHNSGKGFIDGHYKDYFVPQLYSFLKRP

TRTRPLEQKLISEEDLAANDILDYKDDDDKV

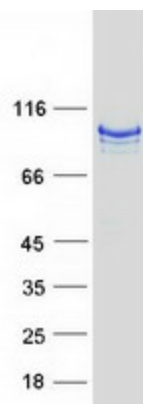
Tag:	C-Myc/DDK
Predicted MW:	106.3 kDa
Concentration:	>0.05 µg/µL as determined by microplate BCA method
Purity:	> 80% as determined by SDS-PAGE and Coomassie blue staining
Buffer:	25 mM Tris-HCl, 100 mM glycine, pH 7.3, 10% glycerol
Preparation:	Recombinant protein was captured through anti-DDK affinity column followed by conventional chromatography steps.



[View online »](#)

Note:	For testing in cell culture applications, please filter before use. Note that you may experience some loss of protein during the filtration process.
Storage:	Store at -80°C.
Stability:	Stable for 12 months from the date of receipt of the product under proper storage and handling conditions. Avoid repeated freeze-thaw cycles.
RefSeq:	NP_002207
Locus ID:	3698
UniProt ID:	P19823
RefSeq Size:	3198
Cytogenetics:	10p14
RefSeq ORF:	2838
Synonyms:	H2P; SHAP
Summary:	The inter-alpha-trypsin inhibitors (ITI) are a family of structurally related plasma serine protease inhibitors involved in extracellular matrix stabilization and in prevention of tumor metastasis. The ITI family contains multiple proteins made up of a light chain (see MIM 176870) and a variable number of heavy chains (Salier et al., 1987 [PubMed 2446322]; Himmelfarb et al., 2004 [PubMed 14744536]).[supplied by OMIM, Nov 2009]

Product images:



Coomassie blue staining of purified ITIH2 protein (Cat# [TP324384]). The protein was produced from HEK293T cells transfected with ITIH2 cDNA clone (Cat# [RC224384]) using MegaTran 2.0 (Cat# [TT210002]).