

Product datasheet for **TP324373M**

GIPC (GIPC1) (NM_202468) Human Recombinant Protein

Product data:

Product Type: Recombinant Proteins

Description: Recombinant protein of human GIPC PDZ domain containing family, member 1 (GIPC1), transcript variant 3, 100 µg

Species: Human

Expression Host: HEK293T

Expression cDNA Clone or AA Sequence: >RC224373 protein sequence
Red=Cloning site **Green**=Tags(s)

MPLGLGRRKKAPPLVENEAAEPGRGGLGVGEPGLGGGGSGGPQMGLPPPPPALRPLRVFHTQLAHGSPT
GRIEGFTNVKELYGKIAEAFRLPTAEVMFCTLNTHKVDMDKLLGGQIGLEDFIFAHVKQRKEVEVFKSE
DALGLTITDNGAGYAFIKRIKEGSVIDHIHLISVGDMEIANGQSLGCRHYEVARLLKELPRGRTFTLK
LTEPRKAFDMISQRSAGRPGSGPQLGTGRGTLRLRSRGPATVEDLPSAFEKAIKVDLLLESYMGIRD
TELAATMVELGDKRNPDELAELDERLGDFAFPDEFVFDVWGAIGDAKVGRY

TRTRPLE**QKLISEEDLAANDILDYKDDDDK**V

Tag: C-Myc/DDK

Predicted MW: 35.9 kDa

Concentration: >0.05 µg/µL as determined by microplate BCA method

Purity: > 80% as determined by SDS-PAGE and Coomassie blue staining

Buffer: 25 mM Tris-HCl, 100 mM glycine, pH 7.3, 10% glycerol

Preparation: Recombinant protein was captured through anti-DDK affinity column followed by conventional chromatography steps.

Note: For testing in cell culture applications, please filter before use. Note that you may experience some loss of protein during the filtration process.

Storage: Store at -80°C.

Stability: Stable for 12 months from the date of receipt of the product under proper storage and handling conditions. Avoid repeated freeze-thaw cycles.

RefSeq: [NP_974197](#)

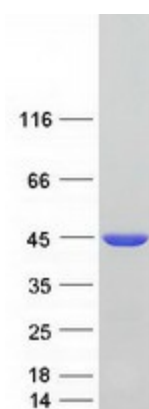
Locus ID: 10755



[View online »](#)

UniProt ID:	O14908 , A0A024R7I0 , A8K2I7
RefSeq Size:	1908
Cytogenetics:	19p13.12
RefSeq ORF:	999
Synonyms:	C19orf3; GIPC; GLUT1CBP; Hs.6454; IIP-1; NIP; OPDM2; RGS19IP1; SEMCAP; SYNECTIIN; SYNECTIN; TIP-2
Summary:	GIPC1 is a scaffolding protein that regulates cell surface receptor expression and trafficking (Lee et al., 2008 [PubMed 18775991]).[supplied by OMIM, Apr 2009]
Protein Families:	Druggable Genome

Product images:



Coomassie blue staining of purified GIPC1 protein (Cat# [TP324373]). The protein was produced from HEK293T cells transfected with GIPC1 cDNA clone (Cat# [RC224373]) using MegaTran 2.0 (Cat# [TT210002]).