

Product datasheet for **TP324336L**

Sumo 2 (SUMO2) (NM_006937) Human Recombinant Protein

Product data:

Product Type:	Recombinant Proteins
Description:	Recombinant protein of human SMT3 suppressor of mif two 3 homolog 2 (<i>S. cerevisiae</i>) (SUMO2), transcript variant 1, 1 mg
Species:	Human
Expression Host:	HEK293T
Expression cDNA Clone or AA Sequence:	>RC224336 representing NM_006937 Red =Cloning site Green =Tags(s)
	MADEKPKKEGVKTENNDHINLKVAGQDGSVQFKIKRHTPLSKLMKAYCERQGLSMRQIRFRFDGQPINET DTPAQLEMEDEDTIDVFQQQTGGVY
	TRTRPLEQKLISEEDLAANDILDYKDDDDKV
Tag:	C-Myc/DDK
Predicted MW:	10.7 kDa
Concentration:	>0.05 µg/µL as determined by microplate BCA method
Purity:	> 80% as determined by SDS-PAGE and Coomassie blue staining
Buffer:	25 mM Tris-HCl, 100 mM glycine, pH 7.3, 10% glycerol
Preparation:	Recombinant protein was captured through anti-DDK affinity column followed by conventional chromatography steps.
Note:	For testing in cell culture applications, please filter before use. Note that you may experience some loss of protein during the filtration process.
Storage:	Store at -80°C.
Stability:	Stable for 12 months from the date of receipt of the product under proper storage and handling conditions. Avoid repeated freeze-thaw cycles.
RefSeq:	<u>NP_008868</u>
Locus ID:	6613
UniProt ID:	<u>P61956</u> , <u>A0A024R8S3</u>
RefSeq Size:	1066



[View online »](#)

Cytogenetics: 17q25.1

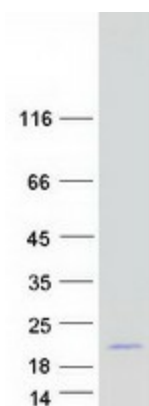
RefSeq ORF: 285

Synonyms: HSMT3; Smt3A; SMT3B; SMT3H2; SUMO3

Summary: This gene encodes a protein that is a member of the SUMO (small ubiquitin-like modifier) protein family. It functions in a manner similar to ubiquitin in that it is bound to target proteins as part of a post-translational modification system. However, unlike ubiquitin which targets proteins for degradation, this protein is involved in a variety of cellular processes, such as nuclear transport, transcriptional regulation, apoptosis, and protein stability. It is not active until the last two amino acids of the carboxy-terminus have been cleaved off. Numerous pseudogenes have been reported for this gene. Alternate transcriptional splice variants, encoding different isoforms, have been characterized. [provided by RefSeq, Jul 2008]

Protein Families: Druggable Genome

Product images:



Coomassie blue staining of purified SUMO2 protein (Cat# [TP324336]). The protein was produced from HEK293T cells transfected with SUMO2 cDNA clone (Cat# [RC224336]) using MegaTran 2.0 (Cat# [TT210002]).