

## Product datasheet for TP324300

### ENTPD5 (NM\_001249) Human Recombinant Protein

#### Product data:

Product Type:	Recombinant Proteins
Description:	Recombinant protein of human ectonucleoside triphosphate diphosphohydrolase 5 (ENTPD5), 20 µg
Species:	Human
Expression Host:	HEK293T
Expression cDNA Clone or AA Sequence:	>RC224300 protein sequence <b>Red</b> =Cloning site <b>Green</b> =Tags(s)

MATSWGTVFFMLVWSCVCSAVSHRNQQTWFEGIFLSSMCPINVSASTLYGIMFDAGSTGTRIHVYTFVQK  
MPGQLPILEGEVFDVSVKPLSAFVDQPKQGAETVQGLLEVAKDSIPRSHWKKTPVVLKATAGLRLLPEHK  
AKALLFEVKEIFRKSPFLVPGSVSIMGDSEILAWVTNFLTGQLHGHRQETVGTLDLGGASTQITFL  
PQFEKTLEQTPRGYLTSEFMFNSTYKLYTHSYLGFGLKAARLATLGALETEGTDGHTFRSACLPRWLEAE  
WIFGGVKYQYGGNQEGEVGFPCYAEVLRVVRGKLHQPEEVQRGSFYAFSYYYDRAVDTDMIDYEKGGIL  
KVEDFERKAREVCDNLENFTSGSPFLCMDLSYITALLKDGFGFADSTVLQLTKKVNNIETGWALGATFHL  
LQSLGISH

**TRTRPLEQKLISEEDLAANDILDYKDDDDKV**

Tag:	C-Myc/DDK
Predicted MW:	47.3 kDa
Concentration:	>0.05 µg/µL as determined by microplate BCA method
Purity:	> 80% as determined by SDS-PAGE and Coomassie blue staining
Buffer:	25 mM Tris-HCl, 100 mM glycine, pH 7.3, 10% glycerol
Preparation:	Recombinant protein was captured through anti-DDK affinity column followed by conventional chromatography steps.
Note:	For testing in cell culture applications, please filter before use. Note that you may experience some loss of protein during the filtration process.
Storage:	Store at -80°C.
Stability:	Stable for 12 months from the date of receipt of the product under proper storage and handling conditions. Avoid repeated freeze-thaw cycles.



[View online >](#)

RefSeq: [NP\\_001240](#)

Locus ID: 957

UniProt ID: [O75356](#), [A0A024R6D3](#)

RefSeq Size: 2064

Cytogenetics: 14q24.3

RefSeq ORF: 1284

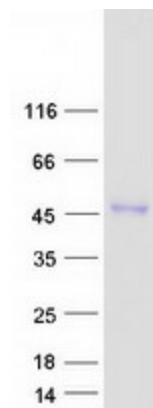
Synonyms: CD39L4; NTPDase-5; PCPH

**Summary:** The protein encoded by this gene is similar to E-type nucleotidases (NTPases)/ecto-ATPase/apyrases. NTPases, such as CD39, mediate catabolism of extracellular nucleotides. ENTPD5 contains 4 apyrase-conserved regions which is characteristic of NTPases. [provided by RefSeq, Jan 2009]

**Protein Families:** Transmembrane

**Protein Pathways:** Purine metabolism, Pyrimidine metabolism

### Product images:



Coomassie blue staining of purified ENTPD5 protein (Cat# TP324300). The protein was produced from HEK293T cells transfected with ENTPD5 cDNA clone (Cat# [RC224300]) using MegaTran 2.0 (Cat# [TT210002]).