

## Product datasheet for **TP324287M**

### MASPIN (SERPINB5) (NM\_002639) Human Recombinant Protein

#### Product data:

**Product Type:** Recombinant Proteins  
**Description:** Recombinant protein of human serpin peptidase inhibitor, clade B (ovalbumin), member 5 (SERPINB5), 100 µg

**Species:** Human

**Expression Host:** HEK293T

**Expression cDNA Clone or AA Sequence:** >RC224287 representing NM\_002639  
**Red**=Cloning site **Green**=Tags(s)

MDALQLANSFAVDLFLKQLCEKEPLGNVLFSPICLSTLSLSLAQVGAKGDTANEIGQVLHFENVKDVPPFGF  
QTVTSDVNLSSFYSLKLIKRLYVDKSLNLSTEFISSTKRPYAKELETVDFDKLEETKGQINNSIKDLT  
DGHFENILADNSVNDQTKILVVNAAYFVGKWMKKFPESETKECPFRVNKTDTKPVQMMNMEATFCMGNID  
SINCKIIELPFQNKHLSMFILLPKDVEDESTGLEKIEKQLNSELSQWTPSTMANAKVKLSIPKFKVEK  
MIDPKACLNLGLKHIFSEDTSDFGMSETKGVALSNVHVHVCLEITEDGGDSIEVPGARILQHKDELNA  
DHPFIYIIRHNKTRNIIFFGKFCSP

**TRTRPLEQKLISEEDLAANDILDYKDDDDKV**

**Tag:** C-Myc/DDK

**Predicted MW:** 41.9 kDa

**Concentration:** >0.05 µg/µL as determined by microplate BCA method

**Purity:** > 80% as determined by SDS-PAGE and Coomassie blue staining

**Buffer:** 25 mM Tris-HCl, 100 mM glycine, pH 7.3, 10% glycerol

**Preparation:** Recombinant protein was captured through anti-DDK affinity column followed by conventional chromatography steps.

**Note:** For testing in cell culture applications, please filter before use. Note that you may experience some loss of protein during the filtration process.

**Storage:** Store at -80°C.

**Stability:** Stable for 12 months from the date of receipt of the product under proper storage and handling conditions. Avoid repeated freeze-thaw cycles.

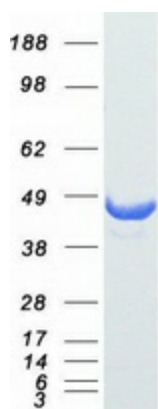
**RefSeq:** [NP\\_002630](#)



[View online »](#)

Locus ID:	5268
UniProt ID:	<a href="#">P36952</a> , <a href="#">A0A024R2B6</a>
RefSeq Size:	2558
Cytogenetics:	18q21.33
RefSeq ORF:	1125
Synonyms:	maspin; PI5
Summary:	Tumor suppressor. It blocks the growth, invasion, and metastatic properties of mammary tumors. As it does not undergo the S (stressed) to R (relaxed) conformational transition characteristic of active serpins, it exhibits no serine protease inhibitory activity. [UniProtKB/Swiss-Prot Function]
Protein Families:	Druggable Genome, Secreted Protein
Protein Pathways:	p53 signaling pathway

### Product images:



Coomassie blue staining of purified SERPINB5 protein (Cat# [TP324287]). The protein was produced from HEK293T cells transfected with SERPINB5 cDNA clone (Cat# [RC224287]) using MegaTran 2.0 (Cat# [TT210002]).