

Product datasheet for **TP324272**

VSX1 (NM_199425) Human Recombinant Protein

Product data:

Product Type:	Recombinant Proteins
Description:	Recombinant protein of human visual system homeobox 1 (VSX1), transcript variant 2, 20 µg
Species:	Human
Expression Host:	HEK293T
Expression cDNA Clone or AA Sequence:	>RC224272 representing NM_199425 Red =Cloning site Green =Tags(s) MTGRDLSLDGRTSSRALVPGGSPRGRPRGFAITDLLGLEAELPAPAGPGQGSGCEGPAVAPCPGPGLDG SSLARGALPLGLLLCGFGTQPPAAARAPCLLLADVFLPPRGPEPAAPLAPSRPPALGRQKRSDSVST SDEDSQSEDRNDLKASPTLGKRKRRHRTVFTAHQLEELEKAFSEAHYPDVYAREMLAVKTELPELDRIQV SGVPFLRSKDTTENVSFPHSVSQA VPSL TRTRPLEQKLISEEDLAANDILDYKDDDDKV
Tag:	C-Myc/DDK
Predicted MW:	24.8 kDa
Concentration:	>0.05 µg/µL as determined by microplate BCA method
Purity:	> 80% as determined by SDS-PAGE and Coomassie blue staining
Buffer:	25 mM Tris-HCl, 100 mM glycine, pH 7.3, 10% glycerol
Preparation:	Recombinant protein was captured through anti-DDK affinity column followed by conventional chromatography steps.
Note:	For testing in cell culture applications, please filter before use. Note that you may experience some loss of protein during the filtration process.
Storage:	Store at -80°C.
Stability:	Stable for 12 months from the date of receipt of the product under proper storage and handling conditions. Avoid repeated freeze-thaw cycles.
RefSeq:	NP_955457
Locus ID:	30813
UniProt ID:	Q9NZR4



[View online »](#)

RefSeq Size: 943

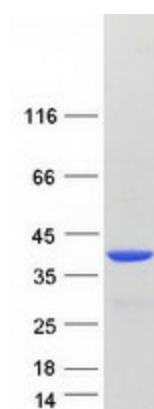
Cytogenetics: 20p11.21

RefSeq ORF: 717

Synonyms: CAASDS; KTCN; KTCN1; PPCD; PPCD1; PPD; RINX

Summary: The protein encoded by this gene contains a paired-like homeodomain and binds to the core of the locus control region of the red/green visual pigment gene cluster. The encoded protein may regulate expression of the cone opsin genes early in development. Mutations in this gene can cause posterior polymorphous corneal dystrophy and keratoconus. Alternatively spliced transcript variants encoding different isoforms have been described. [provided by RefSeq, Jul 2008]

Product images:



Coomassie blue staining of purified VSX1 protein (Cat# TP324272). The protein was produced from HEK293T cells transfected with VSX1 cDNA clone (Cat# [RC224272]) using MegaTran 2.0 (Cat# [TT210002]).