

## Product datasheet for **TP324258L**

### **PABPN1L (NM\_001080487) Human Recombinant Protein**

#### **Product data:**

**Product Type:** Recombinant Proteins  
**Description:** Recombinant protein of human similar to poly(A)binding protein nuclear-like 1 (LOC390748), 1 mg  
**Species:** Human  
**Expression Host:** HEK293T  
**Expression cDNA Clone or AA Sequence:** >RC224258 representing NM\_001080487  
**Red**=Cloning site **Green**=Tags(s)

MWPFPSRSLFPPPTQAWLQTVSSDPEAQGWGAWNETKEILGPEGGEGKEEKEEEEDAEEEDQDGDAGFLLS  
LLEQENLAECPLPDQELEAIKMKVCAMEQAEGTPRPPGVQQQAEEEEGTAAGQLLSPETVGCPLSGTPEE  
KVEADHRSVYVGNVDYGGSAEELEAHFSRCGEVHRVTILCDKFSGHPKGYAYIEFATKGSVQAAVELDQS  
LFRGRVIKVLPKRTNFPGISSTDRGGLRGHPGSRGAPFPHSGLQGRPRLRPQGQNRARGKFSPWFSPY

**TRTRPLEQKLISEEDLAANDILDYKDDDDKV**

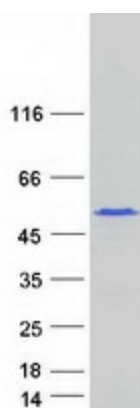
**Tag:** C-Myc/DDK  
**Predicted MW:** 31.3 kDa  
**Concentration:** >0.05 µg/µL as determined by microplate BCA method  
**Purity:** > 80% as determined by SDS-PAGE and Coomassie blue staining  
**Buffer:** 25 mM Tris-HCl, 100 mM glycine, pH 7.3, 10% glycerol  
**Preparation:** Recombinant protein was captured through anti-DDK affinity column followed by conventional chromatography steps.  
**Note:** For testing in cell culture applications, please filter before use. Note that you may experience some loss of protein during the filtration process.  
**Storage:** Store at -80°C.  
**Stability:** Stable for 12 months from the date of receipt of the product under proper storage and handling conditions. Avoid repeated freeze-thaw cycles.  
**RefSeq:** [NP\\_001073956](#)  
**Locus ID:** 390748



[View online »](#)

UniProt ID:	<a href="#">A6NDY0</a> , <a href="#">B6RF28</a>
RefSeq Size:	870
Cytogenetics:	16q24.3
RefSeq ORF:	834
Synonyms:	ePABP2; PABPNL1
Summary:	Binds the poly(A) tail of mRNA.[UniProtKB/Swiss-Prot Function]

### Product images:



Coomassie blue staining of purified PABPN1L protein (Cat# [TP324258]). The protein was produced from HEK293T cells transfected with PABPN1L cDNA clone (Cat# [RC224258]) using MegaTran 2.0 (Cat# [TT210002]).