

## Product datasheet for TP324229

### WWP2 (NM\_199423) Human Recombinant Protein

#### Product data:

Product Type:	Recombinant Proteins
Description:	Purified recombinant protein of Homo sapiens WW domain containing E3 ubiquitin protein ligase 2 (WWP2), transcript variant 3, 20 µg
Species:	Human
Expression Host:	HEK293T
Expression cDNA Clone or AA Sequence:	>RC224229 representing NM_199423 <b>Red</b> =Cloning site <b>Green</b> =Tags(s)
	MASASSSRAGVALPFEKSQLTLKVVSAKPKVHNRQPRINSYVEVAVDGLPSETKKTGKRIGSSELLWNEI IILNVTAQSHLDLKVWSCHTLRNELLGTASVNLNVLKNNGGKMMENMLQLTLNLQ TENKGSVWSGGELTIF LDGPTVDLGNVNGSALTDGSQLPSRDSSGTAVAPENRHQPPSTNCFGGRSRTHRHSGASARTTPATGEQ SPGARSRHRQPVKNSGHSGLANGTVNDEPTTATDPEEPSVVGVTSPPAAPLSVTPNPNTTSLPAPATPAE GEEPSTSGTQQLPAAAQAPDALPAGWEQRELPNGRVVYVDHNTKTTTWERPLPPG
	<b>TRTRPLEQKLISEEDLAANDILDYKDDDDKV</b>
Tag:	C-Myc/DDK
Predicted MW:	35.1 kDa
Concentration:	>0.05 µg/µL as determined by microplate BCA method
Purity:	> 80% as determined by SDS-PAGE and Coomassie blue staining
Buffer:	25 mM Tris-HCl, 100 mM glycine, pH 7.3, 10% glycerol
Preparation:	Recombinant protein was captured through anti-DDK affinity column followed by conventional chromatography steps.
Note:	For testing in cell culture applications, please filter before use. Note that you may experience some loss of protein during the filtration process.
Storage:	Store at -80°C.
Stability:	Stable for 12 months from the date of receipt of the product under proper storage and handling conditions. Avoid repeated freeze-thaw cycles.
RefSeq:	<a href="#">NP_955455</a>
Locus ID:	11060



[View online »](#)

UniProt ID: [O00308](#)

RefSeq Size: 2659

Cytogenetics: 16q22.1

RefSeq ORF: 1005

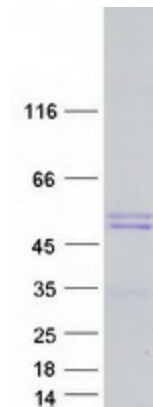
Synonyms: AIP2; WWp2-like

**Summary:** This gene encodes a member of the Nedd4 family of E3 ligases, which play an important role in protein ubiquitination. The encoded protein contains four WW domains and may play a role in multiple processes including chondrogenesis and the regulation of oncogenic signaling pathways via interactions with Smad proteins and the tumor suppressor PTEN. Alternatively spliced transcript variants encoding multiple isoforms have been observed for this gene, and a pseudogene of this gene is located on the long arm of chromosome 10. [provided by RefSeq, Jul 2012]

**Protein Families:** Druggable Genome

**Protein Pathways:** Ubiquitin mediated proteolysis

### Product images:



Coomassie blue staining of purified WWP2 protein (Cat# TP324229). The protein was produced from HEK293T cells transfected with WWP2 cDNA clone (Cat# [RC224229]) using MegaTran 2.0 (Cat# [TT210002]).