

## Product datasheet for **TP324226M**

### Oxytocin neurophysin 1 (OXT) (NM\_000915) Human Recombinant Protein

#### Product data:

Product Type:	Recombinant Proteins
Description:	Recombinant protein of human oxytocin, prepropeptide (OXT), 100 µg
Species:	Human
Expression Host:	HEK293T
Expression cDNA Clone or AA Sequence:	>RC224226 representing NM_000915 <b>Red</b> =Cloning site <b>Green</b> =Tags(s)  MAGPSLACLLGLLALTSACYIQNCPLGGKRAAPDLVRKCLPCGPGGKGRFCGPNICCAEELGCFVGTA EALRCQEENYLPSPCQSGQKACGSGGRC AVLGLCCSPDGCHADPACDAEATFSQR  <b>TRTRPLEQKLISEEDLAANDILDYKDDDDKV</b>
Tag:	C-Myc/DDK
Predicted MW:	10.9 kDa
Concentration:	>0.05 µg/µL as determined by microplate BCA method
Purity:	> 80% as determined by SDS-PAGE and Coomassie blue staining
Buffer:	25 mM Tris-HCl, 100 mM glycine, pH 7.3, 10% glycerol
Preparation:	Recombinant protein was captured through anti-DDK affinity column followed by conventional chromatography steps.
Note:	For testing in cell culture applications, please filter before use. Note that you may experience some loss of protein during the filtration process.
Storage:	Store at -80°C.
Stability:	Stable for 12 months from the date of receipt of the product under proper storage and handling conditions. Avoid repeated freeze-thaw cycles.
RefSeq:	<a href="#">NP_000906</a>
Locus ID:	5020
UniProt ID:	<a href="#">P01178</a> , <a href="#">X5D7M6</a>
RefSeq Size:	512
Cytogenetics:	20p13



[View online »](#)

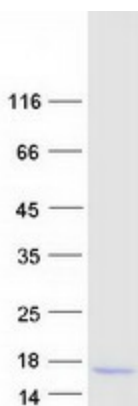
RefSeq ORF: 375

Synonyms: OT; OT-NPI; OXT-NPI

**Summary:** This gene encodes a precursor protein that is processed to produce oxytocin and neurophysin I. Oxytocin is a posterior pituitary hormone which is synthesized as an inactive precursor in the hypothalamus along with its carrier protein neurophysin I. Together with neurophysin, it is packaged into neurosecretory vesicles and transported axonally to the nerve endings in the neurohypophysis, where it is either stored or secreted into the bloodstream. The precursor seems to be activated while it is being transported along the axon to the posterior pituitary. This hormone contracts smooth muscle during parturition and lactation. It is also involved in cognition, tolerance, adaptation and complex sexual and maternal behaviour, as well as in the regulation of water excretion and cardiovascular functions. [provided by RefSeq, Dec 2013]

**Protein Families:** Secreted Protein

### Product images:



Coomassie blue staining of purified OXT protein (Cat# [TP324226]). The protein was produced from HEK293T cells transfected with OXT cDNA clone (Cat# [RC224226]) using MegaTran 2.0 (Cat# [TT210002]).