

## Product datasheet for **TP324182M**

### UBE2I (NM\_194260) Human Recombinant Protein

#### Product data:

Product Type:	Recombinant Proteins
Description:	Recombinant protein of human ubiquitin-conjugating enzyme E2I (UBC9 homolog, yeast) (UBE2I), transcript variant 3, 100 µg
Species:	Human
Expression Host:	HEK293T
Expression cDNA	>RC224182 representing NM_194260
Clone or AA Sequence:	Red=Cloning site Green=Tags(s)

MSGIALSRLAQRKAWRKDHPFGFVAVPTKNPDGTMNLMNWECAIPGKKGTPWEGGLFKLRMLFKDDYPS  
SPPKCKFEPPLFHPNVYPSGTVCLSILEEDKDWRPAITIKQILLGIQELLNEPNIQDPAQAEAYTIYCQN  
RVEYEKRVRAQAKKFAPS

TRTRPLEQKLISEEDLAANDILDYKDDDDKV

Tag:	C-Myc/DDK
Predicted MW:	17.8 kDa
Concentration:	>0.05 µg/µL as determined by microplate BCA method
Purity:	> 80% as determined by SDS-PAGE and Coomassie blue staining
Buffer:	25 mM Tris-HCl, 100 mM glycine, pH 7.3, 10% glycerol
Preparation:	Recombinant protein was captured through anti-DDK affinity column followed by conventional chromatography steps.
Note:	For testing in cell culture applications, please filter before use. Note that you may experience some loss of protein during the filtration process.
Storage:	Store at -80°C.
Stability:	Stable for 12 months from the date of receipt of the product under proper storage and handling conditions. Avoid repeated freeze-thaw cycles.
RefSeq:	<a href="#">NP_919236</a>
Locus ID:	7329
UniProt ID:	<a href="#">P63279</a>



[View online »](#)

RefSeq Size: 1144

Cytogenetics: 16p13.3

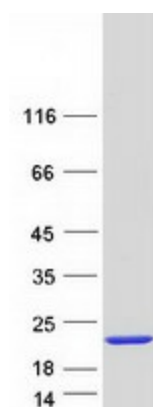
RefSeq ORF: 474

Synonyms: C358B7.1; P18; UBC9

**Summary:** The modification of proteins with ubiquitin is an important cellular mechanism for targeting abnormal or short-lived proteins for degradation. Ubiquitination involves at least three classes of enzymes: ubiquitin-activating enzymes, or E1s, ubiquitin-conjugating enzymes, or E2s, and ubiquitin-protein ligases, or E3s. This gene encodes a member of the E2 ubiquitin-conjugating enzyme family. Four alternatively spliced transcript variants encoding the same protein have been found for this gene. [provided by RefSeq, Jul 2008]

**Protein Pathways:** Ubiquitin mediated proteolysis

### Product images:



Coomassie blue staining of purified UBE2I protein (Cat# [TP324182]). The protein was produced from HEK293T cells transfected with UBE2I cDNA clone (Cat# [RC224182]) using MegaTran 2.0 (Cat# [TT210002]).