

## Product datasheet for **TP324178M**

### Alkaline Phosphatase (ALPI) (NM\_001631) Human Recombinant Protein

#### Product data:

<b>Product Type:</b>	Recombinant Proteins
<b>Description:</b>	Recombinant protein of human alkaline phosphatase, intestinal (ALPI), 100 µg
<b>Species:</b>	Human
<b>Expression Host:</b>	HEK293T
<b>Expression cDNA Clone or AA Sequence:</b>	>RC224178 representing NM_001631 <b>Red</b> =Cloning site <b>Green</b> =Tags(s)
	<p>           MQGPWVLLLLGLRLQLSLGVIPAEENPAFWNRQAAEALDAAKKLQPIQKVAKNLILFLGDGLGVPTVTA            TRILKGQKNGKLGPEPLAMDRFPYLALSPTYNVDRQVPDSAATATAYLCGVKANFQTIGLSAAARFNQC            NTRRGNEISVMNRAKQAGKSVGWTTTRVQHASPAGTYAHTVNRNWYSDADMPASARQEGCQDIATQLI            SNMDDIVILGGGRKYMFPMTGTPDPEYPADASQNGIRLDGKNLVQEWLAKHQGAWYVWNRTELMQASLDQS            VTHLMGLFEPGDTKYEIHRDPTLDPPLMEMTEAALRLLSRNPRGFYLFVEGGRIDHGHHEGVAYQALTEA            VMFDDAIERAGQLTSEEDTLTLVTADHSHVFSFGGYTLRGSSIFGLAPSKAQDSKAYTSILYGNPGYVF            NSGVRPDVNESESGSPDYQQAAVPLSSETHGGEDVAVFARGPQAHLVHGVQEQSFVAHVMAFAACLEPY            TACDLAPPACTTDAHPVAASLPLLAGTLLLLGASAAP    <b>TRTRPLEQKLISEEDLAANDILDYKDDDDKV</b> </p>
<b>Tag:</b>	C-Myc/DDK
<b>Predicted MW:</b>	54.7 kDa
<b>Concentration:</b>	>0.1 µg/µL as determined by microplate BCA method
<b>Purity:</b>	> 80% as determined by SDS-PAGE and Coomassie blue staining
<b>Buffer:</b>	25 mM Tris-HCl, 100 mM glycine, pH 7.3, 10% glycerol
<b>Preparation:</b>	Recombinant protein was captured through anti-DDK affinity column followed by conventional chromatography steps.
<b>Note:</b>	For testing in cell culture applications, please filter before use. Note that you may experience some loss of protein during the filtration process.
<b>Storage:</b>	Store at -80°C.
<b>Stability:</b>	Stable for 12 months from the date of receipt of the product under proper storage and handling conditions. Avoid repeated freeze-thaw cycles.



[View online »](#)

RefSeq: [NP\\_001622](#)

Locus ID: 248

UniProt ID: [P09923](#), [A0A024R4A2](#)

RefSeq Size: 2516

Cytogenetics: 2q37.1

RefSeq ORF: 1584

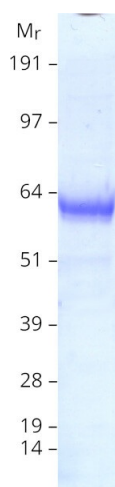
Synonyms: IAP

**Summary:** There are at least four distinct but related alkaline phosphatases: intestinal, placental, placental-like, and liver/bone/kidney (tissue non-specific). The intestinal alkaline phosphatase gene encodes a digestive brush-border enzyme. This enzyme is a component of the gut mucosal defense system and is thought to function in the detoxification of lipopolysaccharide, and in the prevention of bacterial translocation in the gut. [provided by RefSeq, Dec 2014]

**Protein Families:** Druggable Genome

**Protein Pathways:** Folate biosynthesis, Metabolic pathways

### Product images:



Coomassie blue staining of purified ALPI protein (Cat# [TP324178]). The protein was produced from HEK293T cells transfected with ALPI cDNA clone (Cat# [RC224178]) using MegaTran 2.0 (Cat# [TT210002]).