

Product datasheet for TP324178L

Alkaline Phosphatase (ALPI) (NM_001631) Human Recombinant Protein

Product data:

Product Type:	Recombinant Proteins
Description:	Recombinant protein of human alkaline phosphatase, intestinal (ALPI), 1 mg
Species:	Human
Expression Host:	HEK293T
Expression cDNA Clone or AA Sequence:	>RC224178 representing NM_001631 Red =Cloning site Green =Tags(s) <p>MQGPWVLLLLGLRLQLSLGVIPAEENPAFWNRQAAEALDAAKKLQPIQKVAKNLILFLGDGLGVPTVTA TRILKGQKNGKLGPEPLAMDRFPYLALSPTYNVDRQVPDSAATATAYLCGVKANFQTIGLSAAARFNQC NTTRGNEVISVMNRAKQAGKSVGWTTTRVQHASPAGTYAHTVNRNWYSDADMPASARQEGCQDIATQLI SNMDIDVILGGGRKYMFPMTGTPDPEYPADASQNGIRLDGKNLVQEWLAKHQGAWYVWNRTELMQASLDQS VTHLMGLFEPGDTKYEIHRDPTLDPPLMEMTEAALRLLSRNPRGFYLFVEGGRIDHGHHEGVAYQALTEA VMFDDAIERAGQLTSEEDTLTLVTADHSHVFSFGGYTLRGSSIFGLAPSKAQDSKAYTSILYGNPGYVF NSGVRPDVNESESGSPDYQQAAVPLSSETHGGEDVAVFARGPQAHLVHGVQEQSFVAHVMAFAACLEPY TACDLAPPACTTDAHPVAASLPLLAGTLLLLGASAAP</p> <p>TRTRPLEQKLISEEDLAANDILDYKDDDDKV</p>
Tag:	C-Myc/DDK
Predicted MW:	54.7 kDa
Concentration:	>0.1 µg/µL as determined by microplate BCA method
Purity:	> 80% as determined by SDS-PAGE and Coomassie blue staining
Buffer:	25 mM Tris-HCl, 100 mM glycine, pH 7.3, 10% glycerol
Preparation:	Recombinant protein was captured through anti-DDK affinity column followed by conventional chromatography steps.
Note:	For testing in cell culture applications, please filter before use. Note that you may experience some loss of protein during the filtration process.
Storage:	Store at -80°C.
Stability:	Stable for 12 months from the date of receipt of the product under proper storage and handling conditions. Avoid repeated freeze-thaw cycles.



[View online »](#)

RefSeq: [NP_001622](#)

Locus ID: 248

UniProt ID: [P09923](#), [A0A024R4A2](#)

RefSeq Size: 2516

Cytogenetics: 2q37.1

RefSeq ORF: 1584

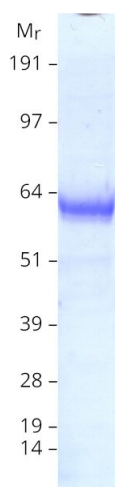
Synonyms: IAP

Summary: There are at least four distinct but related alkaline phosphatases: intestinal, placental, placental-like, and liver/bone/kidney (tissue non-specific). The intestinal alkaline phosphatase gene encodes a digestive brush-border enzyme. This enzyme is a component of the gut mucosal defense system and is thought to function in the detoxification of lipopolysaccharide, and in the prevention of bacterial translocation in the gut. [provided by RefSeq, Dec 2014]

Protein Families: Druggable Genome

Protein Pathways: Folate biosynthesis, Metabolic pathways

Product images:



Coomassie blue staining of purified ALPI protein (Cat# [TP324178]). The protein was produced from HEK293T cells transfected with ALPI cDNA clone (Cat# [RC224178]) using MegaTran 2.0 (Cat# [TT210002]).