

## Product datasheet for TP324178

### Alkaline Phosphatase (ALPI) (NM\_001631) Human Recombinant Protein

#### Product data:

**Product Type:** Recombinant Proteins  
**Description:** Recombinant protein of human alkaline phosphatase, intestinal (ALPI), 20 µg  
**Species:** Human  
**Expression Host:** HEK293T  
**Expression cDNA Clone or AA Sequence:** >RC224178 representing NM\_001631  
**Red**=Cloning site **Green**=Tags(s)

MQQPWVLLLLLGLRLQLSLGVIPAEENPAFWNRQAAEALDAAKQLPIQKQVAKNLILFLGDGLGVPTVTA  
TRILKGQKNGKLGPEPLAMDRFPYLALSPTYNVDRQVPDSAATATAYLCGVKANFQTIGLSAAARFNQC  
NTTRGNEVISVMNRAKQAGKSVGVTTRVQHASPAGTYAHTVNRNWYSADMPASARQEGCQDIATQ  
LI  
SNMIDIVILGGGRKYMFPMPGTPDPEYPADASQNGIRLDGKNLVQEWLAKHQGAWYVWNRTELMQASL  
DQS  
VTHLMGLFEPGDTKYEIHRDPTLDPSLMEMTEAALRLLSRNPRGFYLFVEGGRIDHGHHEGVAYQALTEA  
VMFDDAIERAGQLTSEEDTLTLVTADHSHVFSFGGYTLRGSSIFGLAPSKAQDSKAYTSILYNGNGPYVF  
NSGVRPDVNESESGSPDYQQQAAVPLSSETHGGEDVAVFARGPQAHLVHGVQEQSFAHVMAFAACLE  
PY  
TACDLAPPACTTDAHPVAASLPLLAGTLLLLGASAAP

**TRTRPLEQKLISEEDLAANDILDYKDDDDKV**

**Tag:** C-Myc/DDK  
**Predicted MW:** 54.7 kDa  
**Concentration:** >0.1 µg/µL as determined by microplate BCA method  
**Purity:** > 80% as determined by SDS-PAGE and Coomassie blue staining  
**Buffer:** 25 mM Tris-HCl, 100 mM glycine, pH 7.3, 10% glycerol  
**Preparation:** Recombinant protein was captured through anti-DDK affinity column followed by conventional chromatography steps.  
**Note:** For testing in cell culture applications, please filter before use. Note that you may experience some loss of protein during the filtration process.  
**Storage:** Store at -80°C.



[View online »](#)

**Stability:** Stable for 12 months from the date of receipt of the product under proper storage and handling conditions. Avoid repeated freeze-thaw cycles.

**RefSeq:** [NP\\_001622](#)

**Locus ID:** 248

**UniProt ID:** [P09923](#)

**RefSeq Size:** 2516

**Cytogenetics:** 2q37.1

**RefSeq ORF:** 1584

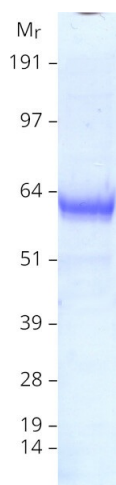
**Synonyms:** IAP

**Summary:** There are at least four distinct but related alkaline phosphatases: intestinal, placental, placental-like, and liver/bone/kidney (tissue non-specific). The intestinal alkaline phosphatase gene encodes a digestive brush-border enzyme. This enzyme is a component of the gut mucosal defense system and is thought to function in the detoxification of lipopolysaccharide, and in the prevention of bacterial translocation in the gut. [provided by RefSeq, Dec 2014]

**Protein Families:** Druggable Genome

**Protein Pathways:** Folate biosynthesis, Metabolic pathways

### Product images:



Coomassie blue staining of purified ALPI protein (Cat# TP324178). The protein was produced from HEK293T cells transfected with ALPI cDNA clone (Cat# [RC224178]) using MegaTran 2.0 (Cat# [TT210002]).