

Product datasheet for **TP324162L**

CADM3 (NM_021189) Human Recombinant Protein

Product data:

Product Type:	Recombinant Proteins
Description:	Recombinant protein of human cell adhesion molecule 3 (CADM3), transcript variant 1, 1 mg
Species:	Human
Expression Host:	HEK293T
Expression cDNA Clone or AA Sequence:	>RC224162 representing NM_021189 Red =Cloning site Green =Tags(s)

MGAPAASLLLLLLFACCWAPGGANLSQDGYWQEQDLELGLTAPLDEAISTVWSSPDMLASQDSQPWTS
DETVAGGTVVLKQCQVKDHEDSSLQWSNPAQQTLYFGEKRALRDNRIQLVTSTPHELISISINVALADEG
EYTCSIFTMPVRTAKSLVTVLGIPQKPIITGYKSSLREKDTATLNCQSSGSKPAARLTWRKGDQELHGEP
TRIQEDPNGKFTVSSSVTFQVTRREDDGASIVCSVNHESLKGADRSTSQRIEVLYTPTAMIRPDPPHPRE
GQKLLHCEGRGNPVPQQYLWEKEGSVPLKMTQESALIFPFLNKSDSGTYGCTATSNMGYSYKAYYTLNV
NDPSPVPSSTYHAIIGGIVAFIVFLLIMLIFLGHYLRHKGTYLTHEAKGSDDAPDADTAIINAEGG
QSGGDDKKEYFI

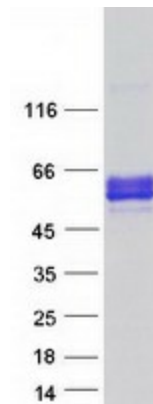
TRTRPLEQKLISEEDLAANDILDYKDDDDKV

Tag:	C-Myc/DDK
Predicted MW:	46.8 kDa
Concentration:	>0.05 µg/µL as determined by microplate BCA method
Purity:	> 80% as determined by SDS-PAGE and Coomassie blue staining
Buffer:	25 mM Tris-HCl, 100 mM glycine, pH 7.3, 10% glycerol
Preparation:	Recombinant protein was captured through anti-DDK affinity column followed by conventional chromatography steps.
Note:	For testing in cell culture applications, please filter before use. Note that you may experience some loss of protein during the filtration process.
Storage:	Store at -80°C.
Stability:	Stable for 12 months from the date of receipt of the product under proper storage and handling conditions. Avoid repeated freeze-thaw cycles.
RefSeq:	NP_067012



[View online »](#)

Locus ID:	57863
UniProt ID:	Q8N126
RefSeq Size:	2540
Cytogenetics:	1q23.2
RefSeq ORF:	1296
Synonyms:	BlgR; IGSF4B; Necl-1; NECL1; synCAM3; TSLL1
Summary:	The protein encoded by this gene is a calcium-independent cell-cell adhesion protein that can form homodimers or heterodimers with other nectin proteins. The encoded protein has both homophilic and heterophilic cell-cell adhesion activity. This gene is reported to be a tumor suppressor gene. [provided by RefSeq, Oct 2016]
Protein Families:	Transmembrane
Protein Pathways:	Cell adhesion molecules (CAMs)

Product images:

Coomassie blue staining of purified CADM3 protein (Cat# [TP324162]). The protein was produced from HEK293T cells transfected with CADM3 cDNA clone (Cat# [RC224162]) using MegaTran 2.0 (Cat# [TT210002]).