

## Product datasheet for TP324156

### MMP13 (NM\_002427) Human Recombinant Protein

#### Product data:

Product Type:	Recombinant Proteins
Description:	Recombinant protein of Human matrix metalloproteinase 13 (collagenase 3) (MMP13), full length, 20 µg
Species:	Human
Expression Host:	HEK293T
Expression cDNA Clone or AA Sequence:	>RC224156 representing NM_002427 Red=Cloning site Green=Tags(s)

MHPGVLA AFLFLSWTHCRALPLPSGGDEDDLSEEDLQFAERYLRSYYHPTNLAGILKENAASSMTERLRE  
MQSFFGLEVTGKLDNTLDVMKKPRCGVPDVGEYNVFPRTLKWSKMNLTYRIVNYTPDMTHSEVEKAFKK  
AFKVVSDVTPLNFRHLHDGIADIMISFGIKEHGDFYFDGPGSLLAHAFPPGPNYGGDAHFDDETWTSS  
SKGYNLFLVAAHEFGHSLGLDHSKDPGALMFPIYTYTGKSHFMLPDDDDVQGIQSLYGPGEDEPNPKHPKT  
PDKCDPSLSLDAITSLRGETMIFKDRFFWRLHPQQVDAELFLTKSFWPELPNRIDAAAYEHPSHDLIFIFR  
GRKFWALNGYDILEGYPKKISELGLPKEVKKISA AVHFEDTGKTLFSGNQVWRYDDTNHIMDKDYPRLI  
EEDFPGIGDKVDAVYEKNGYIYFFNGPIQFEYSIWSNRIVRVM PANSILWC

TRTRPLEQKLISEEDLAANDILDYKDDDDKV

Tag:	Myc-DDK
Predicted MW:	53.82 kDa
Concentration:	>0.05 µg/µL as determined by microplate Bradford method
Purity:	> 80% as determined by SDS-PAGE and Coomassie blue staining
Buffer:	25 mM Tris.HCl, pH7.3, 100 mM glycine, 10% glycerol
Note:	For testing in cell culture applications, please filter before use. Note that you may experience some loss of protein during the filtration process.
Storage:	Store at -80°C after receiving vials.
Stability:	Stable for at least 1 year from receipt of products under proper storage and handling conditions. Avoid repeated freeze-thaw cycles.
RefSeq:	<u><a href="#">NP_002418</a></u>
Locus ID:	4322



[View online »](#)

UniProt ID: [P45452](#), [Q53H33](#)

RefSeq Size: 2722

Cytogenetics: 11q22.2

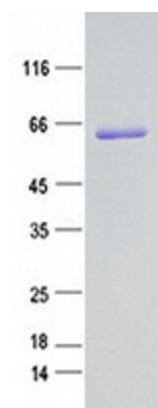
RefSeq ORF: 1413

Synonyms: CLG3; MANDP1; MDST; MMP-13

**Summary:** This gene encodes a member of the peptidase M10 family of matrix metalloproteinases (MMPs). Proteins in this family are involved in the breakdown of extracellular matrix in normal physiological processes, such as embryonic development, reproduction, and tissue remodeling, as well as in disease processes, such as arthritis and metastasis. The encoded preproprotein is proteolytically processed to generate the mature protease. This protease cleaves type II collagen more efficiently than types I and III. It may be involved in articular cartilage turnover and cartilage pathophysiology associated with osteoarthritis. Mutations in this gene are associated with metaphyseal anadysplasia. This gene is part of a cluster of MMP genes on chromosome 11. [provided by RefSeq, Jan 2016]

**Protein Families:** Druggable Genome, Protease

### Product images:



Coomassie blue staining of purified MMP13 protein (Cat #TP324156). The protein was produced from mammalian cells transfected with MMP13 cDNA clone (Cat #[RC224156]).