

Product datasheet for **TP324143M**

NHP2L1 (SNU13) (NM_005008) Human Recombinant Protein

Product data:

Product Type:	Recombinant Proteins
Description:	Recombinant protein of human NHP2 non-histone chromosome protein 2-like 1 (<i>S. cerevisiae</i>) (NHP2L1), transcript variant 1, 100 µg
Species:	Human
Expression Host:	HEK293T
Expression cDNA Clone or AA Sequence:	>RC224143 protein sequence Red =Cloning site Green =Tags(s)
	MTEADVNPKAYPLADAHLTKKLLDLVQSCNYKQLRKGANEATKTLNRGISEFIVMAADAEPLEIILHLP LLCEDKNVPYVFRSKQALGRACGVSVPVIACSVTIKEGSQLKQIQSIQSIERLLV
	SGPTRTRPLEQKLISEEDLAANDILDYKDDDDKV
Tag:	C-Myc/DDK
Predicted MW:	14 kDa
Concentration:	>0.05 µg/µL as determined by microplate BCA method
Purity:	> 80% as determined by SDS-PAGE and Coomassie blue staining
Buffer:	25 mM Tris-HCl, 100 mM glycine, pH 7.3, 10% glycerol
Preparation:	Recombinant protein was captured through anti-DDK affinity column followed by conventional chromatography steps.
Note:	For testing in cell culture applications, please filter before use. Note that you may experience some loss of protein during the filtration process.
Storage:	Store at -80°C.
Stability:	Stable for 12 months from the date of receipt of the product under proper storage and handling conditions. Avoid repeated freeze-thaw cycles.
RefSeq:	NP_004999
Locus ID:	4809
UniProt ID:	P55769 , Q6FHM6
RefSeq Size:	1752



[View online »](#)

Cytogenetics: 22q13.2

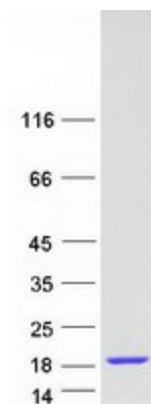
RefSeq ORF: 384

Synonyms: 15.5K; FA-1; FA1; NHP2L1; NHPX; OTK27; SNRNP15-5; SPAG12; SSFA1

Summary: Originally named because of its sequence similarity to the *Saccharomyces cerevisiae* NHP2 (non-histone protein 2), this protein appears to be a highly conserved nuclear protein that is a component of the [U4/U6.U5] tri-snRNP. It binds to the 5' stem-loop of U4 snRNA. Two transcript variants encoding the same protein have been found for this gene. [provided by RefSeq, Jul 2008]

Protein Pathways: Spliceosome

Product images:



Coomassie blue staining of purified SNU13 protein (Cat# [TP324143]). The protein was produced from HEK293T cells transfected with SNU13 cDNA clone (Cat# [RC224143]) using MegaTran 2.0 (Cat# [TT210002]).