

Product datasheet for **TP324141L**

PD L2 (PDCD1LG2) (NM_025239) Human Recombinant Protein

Product data:

Product Type: Recombinant Proteins

Description: Recombinant protein of human programmed cell death 1 ligand 2 (PDCD1LG2), 1 mg

Species: Human

Expression Host: HEK293T

Expression cDNA Clone or AA Sequence: >RC224141 representing NM_025239
Red=Cloning site **Green**=Tags(s)

MIFLLMLSLELQLHQIAALFTVTPKELYIIIEHGSNVTLECNFDTGSHVNLGAITASLQKVENDTSPHR
ERATLLEEQLPLGKASFHIPQVQVRDEGQYQCIIYGVAWDYKYLTLKVKASYRKINTHILKVPETDEVE
LTCQATGYPLAEVSWPNVSPANTSHSRTPEGLYQVTSVLRLLKPPPGRNFSCVFWNTHVRELTASIDLQ
SQMEPRTHPTWLLHIFIPSCIIAFIFIATVIALRKQLCQKLYSSKDTTKRPVTTTKREVNSAI

TRTRPLEQKLISEEDLAANDILDYKDDDDKV

Tag: C-Myc/DDK

Predicted MW: 30.8 kDa

Concentration: >0.05 µg/µL as determined by microplate BCA method

Purity: > 80% as determined by SDS-PAGE and Coomassie blue staining

Buffer: 25 mM Tris-HCl, 100 mM glycine, pH 7.3, 10% glycerol

Preparation: Recombinant protein was captured through anti-DDK affinity column followed by conventional chromatography steps.

Note: For testing in cell culture applications, please filter before use. Note that you may experience some loss of protein during the filtration process.

Storage: Store at -80°C.

Stability: Stable for 12 months from the date of receipt of the product under proper storage and handling conditions. Avoid repeated freeze-thaw cycles.

RefSeq: [NP_079515](#)

Locus ID: 80380

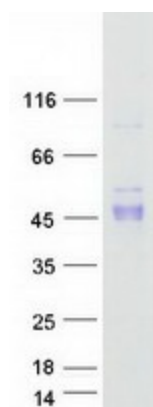
UniProt ID: [Q9BQ51](#)



[View online >](#)

RefSeq Size:	1518
Cytogenetics:	9p24.1
RefSeq ORF:	819
Synonyms:	B7DC; bA574F11.2; Btdc; CD273; PD-L2; PDCD1L2; PDL2
Summary:	Involved in the costimulatory signal, essential for T-cell proliferation and IFNG production in a PDCD1-independent manner. Interaction with PDCD1 inhibits T-cell proliferation by blocking cell cycle progression and cytokine production (By similarity).[UniProtKB/Swiss-Prot Function]
Protein Families:	Transmembrane
Protein Pathways:	Cell adhesion molecules (CAMs)

Product images:



Coomassie blue staining of purified PDCD1LG2 protein (Cat# [TP324141]). The protein was produced from HEK293T cells transfected with PDCD1LG2 cDNA clone (Cat# [RC224141]) using MegaTran 2.0 (Cat# [TT210002]).