

Product datasheet for TP324118

SLC6A17 (NM_001010898) Human Recombinant Protein

Product data:

Product Type:	Recombinant Proteins
Description:	Purified recombinant protein of Human solute carrier family 6, member 17 (SLC6A17), full length, with C-terminal MYC/DDK tag, expressed in HEK293T cells, 20 µg
Species:	Human
Expression Host:	HEK293T
Expression cDNA Clone or AA Sequence:	>RC224118 representing NM_001010898 Red=Cloning site Green=Tags(s)

MPKNSKVTQREHSSEHVTESVADLLALEEPVDYKQSVLNVAGEAGGKQKAVEEELDAEDRPAWNSKLQYI
LAQIGFSVGLGNIWRFPYLCQKNGGGAYLVPYLVLLIIIGIPLFFLELAVGQRIRRGSIGVWHYICPRLG
GIGFSSCIVCLFVGLYNNVIIGWSIFYFFKSFQYPLPWSECPVVRNGSVAVVEAECEKSSATTYFWYREA
LDISDSISESGGLNWKMTLCLLVAWSIVGMAVVKGIQSSGKVMYFSSLFPYVVLACFLVRGLLLLRGAVDG
ILHMFTPKLDKMLDPQVWREAATQVFFALGLGFGGVIAFSSYNKQDNNCHFDAALVSFINFFTSVLATLV
VFAVLGFKANIMNEKCVVENAEKILGYLNTNVLRSRDLIPPHVNFSLHTTKDYMEMYNVIMTVKEDQFSAL
GLDPCLEDELKSVQGTGLAFIAFTEAMTHFPASPFWSVMFFLMLINLGLGSMIGTMAGITTPIIDTFK
VPKEMFTVGCCVFAFLVGLLFVQRSGNYFVTMFDDYSATLPLTLVILENIAVAWIYGTKKFMQELTEML
GFRPYRFYFYMWKVFSPLCMAVLTASIIQLGVTTPPGYSAWIKEEAERYLYFPNWAMALLITLIVVATL
PIPVFVLRHFHLLSDGSNTLSVSYKKGRMMKDISNLEENDETRFILSKVPSEAPSPMPHRSYLGPGST
SPLETSGNPNGRYGSGYLLASTPESEL

TRTRPLEQKLISEEDLAANDILDYKDDDDKV

Tag:	Myc-DDK
Predicted MW:	80.8 kDa
Concentration:	>0.05 µg/µL as determined by microplate Bradford method
Purity:	> 80% as determined by SDS-PAGE and Coomassie blue staining
Buffer:	25 mM Tris-HCl, 100 mM glycine, pH 7.3, 10% glycerol
Note:	For testing in cell culture applications, please filter before use. Note that you may experience some loss of protein during the filtration process.
Storage:	Store at -80°C after receiving vials.



[View online »](#)

Stability: Stable for 12 months from the date of receipt of the product under proper storage and handling conditions. Avoid repeated freeze-thaw cycles.

RefSeq: [NP_001010898](#)

Locus ID: 388662

UniProt ID: [Q9H1V8](#)

RefSeq Size: 6420

Cytogenetics: 1p13.3

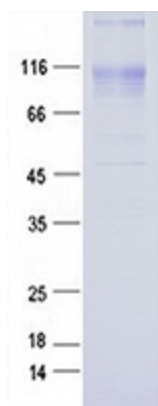
RefSeq ORF: 2181

Synonyms: MRT48; NTT4

Summary: The protein encoded by this gene is a member of the SLC6 family of transporters, which are responsible for the presynaptic uptake of most neurotransmitters. The encoded vesicular transporter is selective for proline, glycine, leucine and alanine. In mouse, the strongest expression of this gene was in cortical and hippocampal tissues where expression increased during embryonic brain development and peaked postnatally. Defects in this gene cause a form of autosomal recessive intellectual disability. [provided by RefSeq, Jul 2017]

Protein Families: Druggable Genome, Transmembrane

Product images:



Purified recombinant protein SLC6A17 was analyzed by SDS-PAGE gel and Coomassie Blue Staining.