

Product datasheet for TP324102L

STIM2 (NM_020860) Human Recombinant Protein

Product data:

| | |
|---------------------------------------|---|
| Product Type: | Recombinant Proteins |
| Description: | Recombinant protein of human stromal interaction molecule 2 (STIM2), 1 mg |
| Species: | Human |
| Expression Host: | HEK293T |
| Expression cDNA Clone or AA Sequence: | >RC224102 representing NM_020860 Red=Cloning site Green=Tags(s) |

MNAAGIRAPEAAGADGTRLAPGGSPCLRRRGRPEESPAAVVAPRGAGELQAAGAPLRFHPASPRRLHPAS
TPGPAWGWLLRRRRWAALLVLGLLVAGAADGCELVPRHLRGRATGSAATAASSPAAAAGDSPALMTDPC
MSLSPPCFTEEDRFSLEALQTIHKQMDDDKDGGIEVEESDEFIREDMKYKDATNKHSHLHREDKHITIED
LWKRWKTSEVHNWTL EDTLQWLIEFVLPQYEKNFRDNNVKGTTLPRIAVHEPSFMISQLKISDRSHRQK
LQKALDVVLFGLTRPPHNWMDKFI TVSIVIGVGGCWFAYTQNKTSKEHVAKMMKDLES LQTAEQSLM
DLQERLEKAQEENRNVAVEKQNLERKMMDEINYAKEEACRLRELREGAECESRRQYAEQELEQVRMALK
KAEKEFELRSSWSVPDALQKWLQLTHEVEVQYNNIKRQNAEMQLAIKDEAEKIKKKRSTVFGTLHVAHS
SSLDEVDHKILEAKKALSELTTCLRERLFRWQQIEKICGFQIAHNSGLPSLTSSLYSDHSWVMPRSIP
PYPIAGGVDDLDETPPIVSQFPGTMAKPPGSLARSSSLCRSRRSIVPSSPQPQRAQLAPHAPHPSHPRH
PHHPQHTPHSLPSPDPDILSVSSCPALYRNEEEEEAIYFSAEKQWEVPTASECDLSLNSSIGRKQSPPLS
LEIYQTLSPRKISRDEVSLEDSSRGDSPVTVDVSWGSPDCVGLTETKSMIFSPASKVYNGILEKSCSMNQ
LSSGIPVPKPRHTSCSSAGNDSKPVQEAPSVARISSIPHDLCHNGEKS KKKPSKIKSLFKKKSK

TRTRPLEQKLISEEDLAANDILDYKDDDDKV

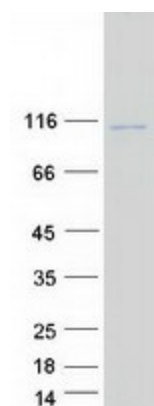
| | |
|----------------|--|
| Tag: | C-Myc/DDK |
| Predicted MW: | 82.6 kDa |
| Concentration: | >0.05 µg/µL as determined by microplate BCA method |
| Purity: | > 80% as determined by SDS-PAGE and Coomassie blue staining |
| Buffer: | 25 mM Tris-HCl, 100 mM glycine, pH 7.3, 10% glycerol |
| Preparation: | Recombinant protein was captured through anti-DDK affinity column followed by conventional chromatography steps. |
| Note: | For testing in cell culture applications, please filter before use. Note that you may experience some loss of protein during the filtration process. |



[View online »](#)

| | |
|---------------|--|
| Storage: | Store at -80°C. |
| Stability: | Stable for 12 months from the date of receipt of the product under proper storage and handling conditions. Avoid repeated freeze-thaw cycles. |
| RefSeq: | NP_065911 |
| Locus ID: | 57620 |
| UniProt ID: | Q9P246 , B3KUB5 |
| RefSeq Size: | 5156 |
| Cytogenetics: | 4p15.2 |
| RefSeq ORF: | 2499 |
| Summary: | This gene is a member of the stromal interaction molecule (STIM) family and likely arose, along with related family member STIM1, from a common ancestral gene. The encoded protein functions to regulate calcium concentrations in the cytosol and endoplasmic reticulum, and is involved in the activation of plasma membrane Orai Ca(2+) entry channels. This gene initiates translation from a non-AUG (UUG) start site. A signal peptide is cleaved from the resulting protein. Multiple transcript variants result from alternative splicing. [provided by RefSeq, Dec 2009] |

Product images:



Coomassie blue staining of purified STIM2 protein (Cat# [TP324102]). The protein was produced from HEK293T cells transfected with STIM2 cDNA clone (Cat# [RC224102]) using MegaTran 2.0 (Cat# [TT210002]).