

Product datasheet for TP324102

STIM2 (NM_020860) Human Recombinant Protein

Product data:

Product Type:	Recombinant Proteins
Description:	Recombinant protein of human stromal interaction molecule 2 (STIM2), 20 µg
Species:	Human
Expression Host:	HEK293T
Expression cDNA Clone or AA Sequence:	>RC224102 representing NM_020860 Red=Cloning site Green=Tags(s)

MNAAGIRAPEAAGADGTRLAPGGSPCLRRRGRPEESPAAVVAPRGAGELQAAGAPLRFHPASPRRLHPAS
TPGPAWGWLLRRRWAALLVLGLLVAGAADGCELVPRHLRGRATGSAATAASSPAAAAGDSPALMTDPC
MSLSPPCFTEEDRFSLEALQTIHKQMDDDKDGGIEVEESDEFIREDMKYKDATNKHSHLHREDKHITIED
LWKRWKTSEVHNWTL EDTLQWLIEFVLPQYEKNFRDNNVKGTTLPRIAVHEPSFMISQLKISDRSHRQK
LQKALDVLFGPLTRPPHNWMDKFI TVSIVIGVGGCWFAYTQNKTSKEHVAKMMKDLESQTAEQSLM
DLQERLEKAQEENRNVAVEKQNLERKMMDEINYAKEEACRLRELREGAECESRRQYAEQELEQVRMALK
KAEKEFELRSSWSVPDALQKWLQLTHEVEVQYNIKRQNAEMQLAIKDEAEKIKKRSTVFGTLHVAHS
SSLDEV D HKILEAKKALSELTTCLRERLFRWQIEKICGFQIAHNSGLPSLTSSLYSDHSWVMPRSIP
PYPIAGGVDDLDETPPIVSQFPGTMAKPPGSLARSSSLCRSRRSIVPSSPQPQRAQLAPHAPHPSHPRH
PHHPQHTPHSLPSPDPDILSVSSCPALYRNEEEEEAIYFSAEKQWEVPTASECDLSNSSIGRKQSPPLS
LEIYQTLSPRKISRDEVSLEDSSRGDSPVTVDVSWGSPDCVGLTETKSMIFSPASKVYNGILEKSCSMNQ
LSSGIPVPKPRHTSCSSAGNDSKPVQEAPSVARISSIPHDLCHNGEKS K KPSKIKSLFKKSK

TRTRPLEQKLISEEDLAANDILDYKDDDDKV

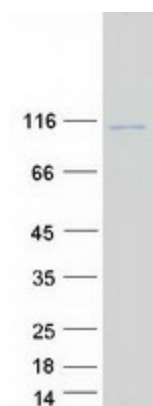
Tag:	C-Myc/DDK
Predicted MW:	82.6 kDa
Concentration:	>0.05 µg/µL as determined by microplate BCA method
Purity:	> 80% as determined by SDS-PAGE and Coomassie blue staining
Buffer:	25 mM Tris-HCl, 100 mM glycine, pH 7.3, 10% glycerol
Preparation:	Recombinant protein was captured through anti-DDK affinity column followed by conventional chromatography steps.
Note:	For testing in cell culture applications, please filter before use. Note that you may experience some loss of protein during the filtration process.



[View online »](#)

Storage:	Store at -80°C.
Stability:	Stable for 12 months from the date of receipt of the product under proper storage and handling conditions. Avoid repeated freeze-thaw cycles.
RefSeq:	NP_065911
Locus ID:	57620
UniProt ID:	Q9P246 , B3KUB5
RefSeq Size:	5156
Cytogenetics:	4p15.2
RefSeq ORF:	2499
Summary:	This gene is a member of the stromal interaction molecule (STIM) family and likely arose, along with related family member STIM1, from a common ancestral gene. The encoded protein functions to regulate calcium concentrations in the cytosol and endoplasmic reticulum, and is involved in the activation of plasma membrane Orai Ca(2+) entry channels. This gene initiates translation from a non-AUG (UUG) start site. A signal peptide is cleaved from the resulting protein. Multiple transcript variants result from alternative splicing. [provided by RefSeq, Dec 2009]

Product images:



Coomassie blue staining of purified STIM2 protein (Cat# TP324102). The protein was produced from HEK293T cells transfected with STIM2 cDNA clone (Cat# [RC224102]) using MegaTran 2.0 (Cat# [TT210002]).