

## Product datasheet for **TP324099M**

### MTMR2 (NM\_201278) Human Recombinant Protein

#### Product data:

Product Type:	Recombinant Proteins
Description:	Recombinant protein of human myotubularin related protein 2 (MTMR2), transcript variant 2, 100 µg
Species:	Human
Expression Host:	HEK293T
Expression cDNA Clone or AA Sequence:	>RC224099 representing NM_201278 <b>Red</b> =Cloning site <b>Green</b> =Tags(s)

METSSSCESLGSQPAAARPPSVDSLSSASTSHSENSVHTKSASVSSDSISTSADNFSPDLRVLRRESNKL  
AEMEEPPLLPGENIKDMAKDVTYICPFTGAVRGLTVTNYRLYFKSMERDPPFVLDAASLGVINRVEKIGG  
ASSRGENSYGLETVCCKDIRNLRFAHKPEGRTRRSIFENLMKYAFPVSNNLPLFAFEYKEVFPENGWKLYD  
PLLEYRRQGIPNESWRITKINERYELCDTYPALLVVPANIPDEELKRVASFRSRGRIPVLSWIHPESQAT  
ITRCSQPMVGVSGKRSKEDEKYLQAIMDSNAQSHKIFIDARPSVNAVANKAKGGGYESEDAYQNAELVF  
LDIHNIHVMRESLRKLKEIVYPNIEETHWLSNLESTHWLEHIKLILAGALRIADKVESGKTSVVVHCSDG  
WDRTAQLTSLAMLMLDGYRRTIRGFEVLVEKEWLSFGHRFQLRVGHGDKNHADADRSPVFLQFIDCVWQM  
TRQFPTAFEFNEYFLITILDHLYSCLFGTFLCNSEQQRGKENLPKRTVSLWSYINSQLEDFTNPLYGSYS  
NHVLYPVASMRHLELWVGYYIRWNPRMKPQEPIHNRYKELLAKRAELQKKVEELQREISNRSTSSSERAS  
SPAQCVPVQTVV

**TRTRPLEQKLISEEDLAANDILDYKDDDDKV**

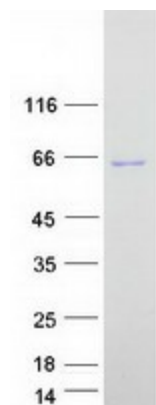
Tag:	C-Myc/DDK
Predicted MW:	65.8 kDa
Concentration:	>0.05 µg/µL as determined by microplate BCA method
Purity:	> 80% as determined by SDS-PAGE and Coomassie blue staining
Buffer:	25 mM Tris-HCl, 100 mM glycine, pH 7.3, 10% glycerol
Preparation:	Recombinant protein was captured through anti-DDK affinity column followed by conventional chromatography steps.
Note:	For testing in cell culture applications, please filter before use. Note that you may experience some loss of protein during the filtration process.
Storage:	Store at -80°C.



[View online »](#)

<b>Stability:</b>	Stable for 12 months from the date of receipt of the product under proper storage and handling conditions. Avoid repeated freeze-thaw cycles.
<b>RefSeq:</b>	<a href="#">NP_958435</a>
<b>Locus ID:</b>	8898
<b>UniProt ID:</b>	<a href="#">Q13614</a> , <a href="#">A0A024R3B7</a>
<b>RefSeq Size:</b>	4688
<b>Cytogenetics:</b>	11q21
<b>RefSeq ORF:</b>	1716
<b>Synonyms:</b>	CMT4B; CMT4B1
<b>Summary:</b>	This gene is a member of the myotubularin family of phosphoinositide lipid phosphatases. The encoded protein possesses phosphatase activity towards phosphatidylinositol-3-phosphate and phosphatidylinositol-3,5-bisphosphate. Mutations in this gene are a cause of Charcot-Marie-Tooth disease type 4B, an autosomal recessive demyelinating neuropathy. Alternatively spliced transcript variants encoding multiple isoforms have been found for this gene. [provided by RefSeq, Aug 2011]
<b>Protein Families:</b>	Druggable Genome, Phosphatase
<b>Protein Pathways:</b>	Fructose and mannose metabolism, Metabolic pathways, Riboflavin metabolism, Thiamine metabolism

### Product images:



Coomassie blue staining of purified MTMR2 protein (Cat# [TP324099]). The protein was produced from HEK293T cells transfected with MTMR2 cDNA clone (Cat# [RC224099]) using MegaTran 2.0 (Cat# [TT210002]).