

## Product datasheet for **TP324075L**

### OCM2 (NM\_006188) Human Recombinant Protein

#### Product data:

Product Type:	Recombinant Proteins
Description:	Recombinant protein of human oncomodulin 2 (OCM2), 1 mg
Species:	Human
Expression Host:	HEK293T
Expression cDNA Clone or AA Sequence:	>RC224075 protein sequence <b>Red</b> =Cloning site <b>Green</b> =Tags(s)
	MSITDVL SADDIAAALQECRDPDTFEPQKFFQTSGLSKMSANQVKDVFRFIDNDQSGYLDEEELKFFLQK FESGARELTESETKSLMAAADNDGDGKIGAEFFQEMVHS
	<b>TRTRPLEQKLISEEDLAANDILDYKDDDDKV</b>
Tag:	C-Myc/DDK
Predicted MW:	11.9 kDa
Concentration:	>0.05 µg/µL as determined by microplate BCA method
Purity:	> 80% as determined by SDS-PAGE and Coomassie blue staining
Buffer:	25 mM Tris-HCl, 100 mM glycine, pH 7.3, 10% glycerol
Preparation:	Recombinant protein was captured through anti-DDK affinity column followed by conventional chromatography steps.
Note:	For testing in cell culture applications, please filter before use. Note that you may experience some loss of protein during the filtration process.
Storage:	Store at -80°C.
Stability:	Stable for 12 months from the date of receipt of the product under proper storage and handling conditions. Avoid repeated freeze-thaw cycles.
RefSeq:	<a href="#">NP_006179</a>
Locus ID:	4951
UniProt ID:	<a href="#">P0CE71</a>
RefSeq Size:	588
Cytogenetics:	7q21.3



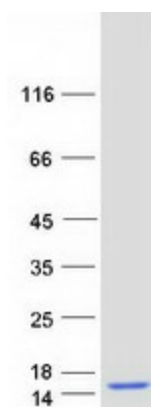
[View online »](#)

RefSeq ORF: 327

Synonyms: OCM; OM

Summary: This gene is similar to the oncomodulin gene, a high-affinity calcium ion-binding protein that belongs to the superfamily of calmodulin proteins, also known as the EF-hand proteins.  
[provided by RefSeq, Jul 2008]

### Product images:



Coomassie blue staining of purified OCM2 protein (Cat# [TP324075]). The protein was produced from HEK293T cells transfected with OCM2 cDNA clone (Cat# [RC224075]) using MegaTran 2.0 (Cat# [TT210002]).