

Product datasheet for TP324070M

Lipin 2 (LPIN2) (NM_014646) Human Recombinant Protein

Product data:

Product Type: Recombinant Proteins
Description: Recombinant protein of human lipin 2 (LPIN2), 100 µg
Species: Human
Expression Host: HEK293T
Expression cDNA Clone or AA Sequence: >RC224070 representing NM_014646
Red=Cloning site Green=Tags(s)

MNYVGQLAGQVIVTVKELYKGINQATLSGCIDVIVVQQQDGSYQCSPFHVRFGLKGLVRSKEKVIDIEIN
 GSAVDLHMKLGDNGEAFVETEETEEYEKLPAYLATSPIPTEDQFFKIDITPLVKSGGDETPSQSSDISHV
 LETETIFTSSVKKKKRRRKKYKQDSKKEEQASAAEDTCDVGVSSDDDKGAQAARGSSNASLKEEICK
 EPLLFHSGDHYPLSDGDWSPLETTYPTACPKSDSELEVKAESLLRSESHMEWTWGGFPESTKVKRER
 SDHHPRTATITPSENTHFRVIPSEDNLISEVEKDASMEDTVCTIVKPKPRALGTQMSDPTSVAELLEPLL
 ESTQISSMLDADHLPNAALAEAPSESKPAKVDSPSKKKGVHKRSQHQQPDDIYLLDLKGLEPEVAALYF
 PKSESEPGSRQWPESDTLSGSQSPQSVGSAADSGTECLSDSAMDLPDVTLSLCGGLSENGEISKEKFME
 HIITYHEFAENPGLIDNPNLVIRIYNRYNWALAAPMILSLQVFQKSLPKATVESWVKDKMPKKSGRWWF
 WRKRESMTKQLPESKEGKSEAPPASDLPSSSKEPAGARPAENDSSSDEGSQELEESITVDPIPTEPLSHG
 STTSYKSLRLSSDQIAKLKLDHGPNDVFSITTQYQGTCTRCAGTIYLNWVNDKIIISDIDGTITKSDAL
 GQILPQLGKDWTHQGIKLYHSINENGYKFLYCSARAIGMADMTRGYLHWVNDKGTILPRGPLMLSPSSL
 FSAFHREVIEKKPEKFKIECLNDIKNLFAPSKQPFYAAFGRPNPDVYAYTQVGVPCDRIFTVNPKGELIQ
 ERTKGNKSSYHRLSELVEHVFPILLSKEQNSAFPCPEFSSFCYWRDPIPEVDLDDLS

TRTRPLEQKLISEEDLAANDILDYKDDDDKV

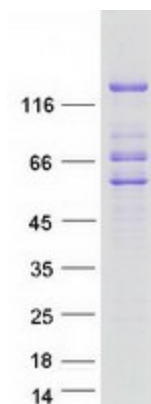
Tag: C-Myc/DDK
Predicted MW: 99.2 kDa
Concentration: >0.05 µg/µL as determined by microplate BCA method
Purity: > 80% as determined by SDS-PAGE and Coomassie blue staining
Buffer: 25 mM Tris-HCl, 100 mM glycine, pH 7.3, 10% glycerol
Preparation: Recombinant protein was captured through anti-DDK affinity column followed by conventional chromatography steps.



[View online »](#)

Note:	For testing in cell culture applications, please filter before use. Note that you may experience some loss of protein during the filtration process.
Storage:	Store at -80°C.
Stability:	Stable for 12 months from the date of receipt of the product under proper storage and handling conditions. Avoid repeated freeze-thaw cycles.
RefSeq:	NP_055461
Locus ID:	9663
UniProt ID:	Q92539
RefSeq Size:	6245
Cytogenetics:	18p11.31
RefSeq ORF:	2688
Summary:	Mouse studies suggest that this gene functions during normal adipose tissue development and may play a role in human triglyceride metabolism. This gene represents a candidate gene for human lipodystrophy, characterized by loss of body fat, fatty liver, hypertriglyceridemia, and insulin resistance. [provided by RefSeq, Jul 2008]

Product images:



Coomassie blue staining of purified LPIN2 protein (Cat# [TP324070]). The protein was produced from HEK293T cells transfected with LPIN2 cDNA clone (Cat# [RC224070]) using MegaTran 2.0 (Cat# [TT210002]).