

Product datasheet for TP324070L

Lipin 2 (LPIN2) (NM_014646) Human Recombinant Protein

Product data:

| | |
|---------------------------------------|--|
| Product Type: | Recombinant Proteins |
| Description: | Recombinant protein of human lipin 2 (LPIN2), 1 mg |
| Species: | Human |
| Expression Host: | HEK293T |
| Expression cDNA Clone or AA Sequence: | >RC224070 representing NM_014646 Red=Cloning site Green=Tags(s) |

MNYVGQLAGQVIVTVKELYKGINQATLSGCIDVIVVQQQDGSYQCSPFHVRFGLGLVLSKEKVIDIEIN
GSAVDLHMKLGDNGEAFVETEETEEYEKLPAYLATSPIPTEDQFFKIDITPLVKSGGETPSQSSDISHV
LETETIFTSSVKKKKRRRKKYQDSKKEEQASAAAEDTCDVGVSSDDDKGAQAARGSSNASLKEEICK
EPLLFHSGDHYPLSDGDWSPLETTYPTACPKSDSELEVKAESLLRSESHMEWTWGGFPESTKVKRER
SDHHPRTATITPSENTHFRVIPSEDNLISEVEKDASMEDTVCTIVKPKPRALGTQMSDPTSVAELLEPPL
ESTQISSMLDADHLPNAALAEAPSESKPAKVDSPSKKKGVHKRSQHQQPDDIYLLDLKGLEPEVAALYF
PKSESEPGSRQWPESDTLSGSQSPQSVGSAADSGTECLSDSAMDLPDVTLSLCGGLSENGEISKEKFME
HIITYHEFAENPGLIDNPNLVIRIYNRYNWALAAPMILSLQVFQKSLPKATVESWVKDKMPKKSGRWWF
WRKRESMTKQLPESKEGKSEAPPASDLPSSSKEPAGARPAENDSSSDEGSQELEESITVDPIPTEPLSHG
STTSYKSLRLSSDQIAKLKLDHGPNDVFSITTQYQGTCTRCAGTIYLNWVNDKIIISDIDGTITKSDAL
GQILPQLGKDWTHQGIKLYHSINENGYKFLYCSARAIGMADMTRGYLHWVNDKGTILPRGPLMLSPSSL
FSAFHREVIEKKPEKFKIECLNDIKNLFAPSKQPFYAAFGNRPNDVYAYTQVGVDPDRIFTVNPKGELIQ
ERTKGNKSSYHRLSELVEHVFPILLSKEQNSAFPCPEFSSFCYWRDPIPEVDLDDLS

TRTRPLEQKLISEEDLAANDILDYKDDDDKV

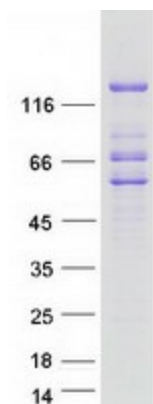
| | |
|----------------|--|
| Tag: | C-Myc/DDK |
| Predicted MW: | 99.2 kDa |
| Concentration: | >0.05 µg/µL as determined by microplate BCA method |
| Purity: | > 80% as determined by SDS-PAGE and Coomassie blue staining |
| Buffer: | 25 mM Tris-HCl, 100 mM glycine, pH 7.3, 10% glycerol |
| Preparation: | Recombinant protein was captured through anti-DDK affinity column followed by conventional chromatography steps. |



[View online >](#)

| | |
|----------------------|---|
| Note: | For testing in cell culture applications, please filter before use. Note that you may experience some loss of protein during the filtration process. |
| Storage: | Store at -80°C. |
| Stability: | Stable for 12 months from the date of receipt of the product under proper storage and handling conditions. Avoid repeated freeze-thaw cycles. |
| RefSeq: | NP_055461 |
| Locus ID: | 9663 |
| UniProt ID: | Q92539 |
| RefSeq Size: | 6245 |
| Cytogenetics: | 18p11.31 |
| RefSeq ORF: | 2688 |
| Summary: | Mouse studies suggest that this gene functions during normal adipose tissue development and may play a role in human triglyceride metabolism. This gene represents a candidate gene for human lipodystrophy, characterized by loss of body fat, fatty liver, hypertriglyceridemia, and insulin resistance. [provided by RefSeq, Jul 2008] |

Product images:



Coomassie blue staining of purified LPIN2 protein (Cat# [TP324070]). The protein was produced from HEK293T cells transfected with LPIN2 cDNA clone (Cat# [RC224070]) using MegaTran 2.0 (Cat# [TT210002]).