

Product datasheet for **TP324031L**

SMAP1 (NM_021940) Human Recombinant Protein

Product data:

Product Type: Recombinant Proteins

Description: Recombinant protein of human small ArfGAP 1 (SMAP1), transcript variant 2, 1 mg

Species: Human

Expression Host: HEK293T

Expression cDNA >RC224031 representing NM_021940

Clone or AA **Red**=Cloning site **Green**=Tags(s)

Sequence:

MATRSCREKAQKLNEQHQLILSKLLREEDNKYCADCEAKGPRWASWNIGVFICIRCAGIHRNLGVHISRV
KSVNLDQWTAEQIQCMQDMGNTKARLLYEANLPENFRRPQTDQAVEFFIRDKYEKKKYYDKNAIAITNKE
KEKKKEKKREKEPEKPAKPLTAEKLQKKDQQLPKKSTSPKAAEPTVDLLGLDGPVAVPTNGNTTVP
PLNDDLDFGPMISNPLPATVMPPAQGTPSAPAAATLSTVTSGLDLDFTEQTTKSEEVAKKQLSKDSILS
LYGTGTIQQQSTPGVFMGPTNIPFTSQAPAAFQGFPSMGVPPAAPGLIGNVMGQSPSMVMGMPMPNGFM
GNAQTGVMPLPQNVVGPQGGMVGQMGAPQSKFGLPQAQQPQWSLSQMNQMQMAGMISSATPTAGFGQPSS
TTAGWSGSSSGQTLSTQLWK

TRTRPLEQKLISEEDLAANDILDYKDDDDKV

Tag: C-Myc/DDK

Predicted MW: 47.4 kDa

Concentration: >0.05 µg/µL as determined by microplate BCA method

Purity: > 80% as determined by SDS-PAGE and Coomassie blue staining

Buffer: 25 mM Tris-HCl, 100 mM glycine, pH 7.3, 10% glycerol

Preparation: Recombinant protein was captured through anti-DDK affinity column followed by conventional chromatography steps.

Note: For testing in cell culture applications, please filter before use. Note that you may experience some loss of protein during the filtration process.

Storage: Store at -80°C.

Stability: Stable for 12 months from the date of receipt of the product under proper storage and handling conditions. Avoid repeated freeze-thaw cycles.

RefSeq: [NP_068759](#)



[View online »](#)

Locus ID: 60682

UniProt ID: [Q8IYB5](#)

RefSeq Size: 3268

Cytogenetics: 6q13

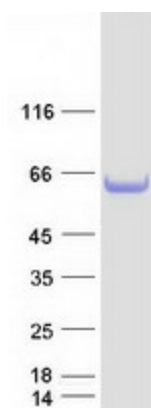
RefSeq ORF: 1320

Synonyms: SMAP-1

Summary: The protein encoded by this gene is similar to the mouse stromal membrane-associated protein-1. This similarity suggests that this human gene product is also a type II membrane glycoprotein involved in the erythropoietic stimulatory activity of stromal cells. Alternate splicing results in multiple transcript variants encoding different isoforms. [provided by RefSeq, Jul 2008]

Protein Pathways: Endocytosis

Product images:



Coomassie blue staining of purified SMAP1 protein (Cat# [TP324031]). The protein was produced from HEK293T cells transfected with SMAP1 cDNA clone (Cat# [RC224031]) using MegaTran 2.0 (Cat# [TT210002]).