

## Product datasheet for **TP323951M**

### SCN4B (NM\_174934) Human Recombinant Protein

#### Product data:

**Product Type:** Recombinant Proteins

**Description:** Recombinant protein of human sodium channel, voltage-gated, type IV, beta (SCN4B), transcript variant 1, 100 µg

**Species:** Human

**Expression Host:** HEK293T

**Expression cDNA Clone or AA Sequence:** >RC223951 representing NM\_174934  
Red=Cloning site Green=Tags(s)

MPGAGDGGKAPARWLGTGLLGLFLLPVTLSLEVSVGKATDIYAVNGTEILLPCTFSSCFGFEDLHFRWTY  
NSSDAFKILIEGTVKNEKSDPKVTLKDDDRITLVGSTKEKMNNISIVLRDLEFSDTGKYTCHVKNPKENN  
LQHHATIFLQVDRLEEVDNTVTLILAVVGGVIGLLILLIKKLIIFILKKTREKKKECLVSSSGNDN  
TENGLPGSKAEKPPSKV

TRTRPLEQKLISEEDLAANDILDYKDDDDKV

**Tag:** C-Myc/DDK

**Predicted MW:** 22 kDa

**Concentration:** >0.05 µg/µL as determined by microplate BCA method

**Purity:** > 80% as determined by SDS-PAGE and Coomassie blue staining

**Buffer:** 25 mM Tris-HCl, 100 mM glycine, pH 7.3, 10% glycerol

**Preparation:** Recombinant protein was captured through anti-DDK affinity column followed by conventional chromatography steps.

**Note:** For testing in cell culture applications, please filter before use. Note that you may experience some loss of protein during the filtration process.

**Storage:** Store at -80°C.

**Stability:** Stable for 12 months from the date of receipt of the product under proper storage and handling conditions. Avoid repeated freeze-thaw cycles.

**RefSeq:** [NP\\_777594](#)

**Locus ID:** 6330



[View online »](#)

UniProt ID: [Q8IWT1](#), [B0YJ93](#)

RefSeq Size: 4489

Cytogenetics: 11q23.3

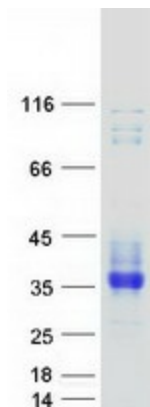
RefSeq ORF: 684

Synonyms: ATFB17; LQT10; Navbeta4

**Summary:** The protein encoded by this gene is one of several sodium channel beta subunits. These subunits interact with voltage-gated alpha subunits to change sodium channel kinetics. The encoded transmembrane protein forms interchain disulfide bonds with SCN2A. Defects in this gene are a cause of long QT syndrome type 10 (LQT10). Three protein-coding and one non-coding transcript variant have been found for this gene.[provided by RefSeq, Mar 2009]

**Protein Families:** Ion Channels: Sodium, Transmembrane

### Product images:



Coomassie blue staining of purified SCN4B protein (Cat# [TP323951]). The protein was produced from HEK293T cells transfected with SCN4B cDNA clone (Cat# [RC223951]) using MegaTran 2.0 (Cat# [TT210002]).