

## Product datasheet for TP323912M

### TIPRL (NM\_152902) Human Recombinant Protein

#### Product data:

Product Type:	Recombinant Proteins
Description:	Recombinant protein of human TIP41, TOR signaling pathway regulator-like ( <i>S. cerevisiae</i> ) (TIPRL), transcript variant 1, 100 µg
Species:	Human
Expression Host:	HEK293T
Expression cDNA Clone or AA Sequence:	>RC223912 representing NM_152902 Red=Cloning site Green=Tags(s)

MMIHGFQSSHRDFCFGPWKLTASKTHIMKSADVEKLADDELHMPSLPEMMFGDNVLRIQHGSGFGIEFNAT  
DALRCVNNYQGMLKVACAEWQESRTEGEHSKEVIKPYDWTYTTDYKGTLLGESLKLKVVPTTDHIDTEK  
LKAREQIKFFEEVLLFEDELHDHGVSSLSVKIRVMPSSFFLLLRFFLRIDGVLIRMNDTRLYHEADKTYM  
LREYTSRESKISSLMHVPPSLFTEPNEISQYLPIKEAVCEKLIFPERIDPNPADSQKSTQVE

TRTRPLEQKLISEEDLAANDILDYKDDDDKV

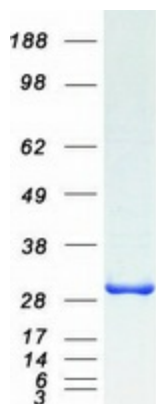
Tag:	C-Myc/DDK
Predicted MW:	31.3 kDa
Concentration:	>0.05 µg/µL as determined by microplate BCA method
Purity:	> 80% as determined by SDS-PAGE and Coomassie blue staining
Buffer:	25 mM Tris-HCl, 100 mM glycine, pH 7.3, 10% glycerol
Preparation:	Recombinant protein was captured through anti-DDK affinity column followed by conventional chromatography steps.
Note:	For testing in cell culture applications, please filter before use. Note that you may experience some loss of protein during the filtration process.
Storage:	Store at -80°C.
Stability:	Stable for 12 months from the date of receipt of the product under proper storage and handling conditions. Avoid repeated freeze-thaw cycles.
RefSeq:	<a href="#">NP_690866</a>
Locus ID:	261726



[View online »](#)

UniProt ID:	<a href="#">O75663</a>
RefSeq Size:	3032
Cytogenetics:	1q24.2
RefSeq ORF:	816
Synonyms:	TIP; TIP41; TIPRL1
Summary:	TIPRL is an inhibitory regulator of protein phosphatase-2A (PP2A) (see PPP2CA; MIM 176915), PP4 (see PPP4C; MIM 602035), and PP6 (see PPP6C; MIM 612725) (McConnell et al., 2007 [PubMed 17384681]).[supplied by OMIM, Nov 2010]

### Product images:



Coomassie blue staining of purified TIPRL protein (Cat# [TP323912]). The protein was produced from HEK293T cells transfected with TIPRL cDNA clone (Cat# [RC223912]) using MegaTran 2.0 (Cat# [TT210002]).