

Product datasheet for TP323912L

TIPRL (NM_152902) Human Recombinant Protein

Product data:

Product Type: Recombinant Proteins
Description: Recombinant protein of human TIP41, TOR signaling pathway regulator-like (*S. cerevisiae*) (TIPRL), transcript variant 1, 1 mg
Species: Human
Expression Host: HEK293T
Expression cDNA Clone or AA Sequence: >RC223912 representing NM_152902
Red=Cloning site **Green**=Tags(s)

MMIHGFQSSHRDFCFGPWKLTASKTHIMKSADVEKLADLHMPSPLEMMFGDNVLRIQHGSGFGIEFNAT
DALRCVNNYQGMLKVACAEWQESRTEGEHSKEVIKPYDWTYTTDYKGTLLGESLKLKVVPTTDHIDTEK
LKAREQIKFFEEVLLFEDELHDHGVSSLSVKIRVMPSSFFLLLRFFLRIDGVLIRMNDTRLYHEADKTYM
LREYTSRESKISSLMHVPPSLFTEPNEISQYLPIKEAVCEKLIFPERIDPNPADSQKSTQVE

TRTRPLEQKLISEEDLAANDILDYKDDDDKV

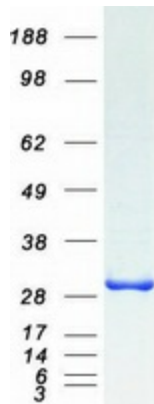
Tag: C-Myc/DDK
Predicted MW: 31.3 kDa
Concentration: >0.05 µg/µL as determined by microplate BCA method
Purity: > 80% as determined by SDS-PAGE and Coomassie blue staining
Buffer: 25 mM Tris-HCl, 100 mM glycine, pH 7.3, 10% glycerol
Preparation: Recombinant protein was captured through anti-DDK affinity column followed by conventional chromatography steps.
Note: For testing in cell culture applications, please filter before use. Note that you may experience some loss of protein during the filtration process.
Storage: Store at -80°C.
Stability: Stable for 12 months from the date of receipt of the product under proper storage and handling conditions. Avoid repeated freeze-thaw cycles.
RefSeq: [NP_690866](#)
Locus ID: 261726



[View online »](#)

UniProt ID:	O75663
RefSeq Size:	3032
Cytogenetics:	1q24.2
RefSeq ORF:	816
Synonyms:	TIP; TIP41; TIPRL1
Summary:	TIPRL is an inhibitory regulator of protein phosphatase-2A (PP2A) (see PPP2CA; MIM 176915), PP4 (see PPP4C; MIM 602035), and PP6 (see PPP6C; MIM 612725) (McConnell et al., 2007 [PubMed 17384681]).[supplied by OMIM, Nov 2010]

Product images:



Coomassie blue staining of purified TIPRL protein (Cat# [TP323912]). The protein was produced from HEK293T cells transfected with TIPRL cDNA clone (Cat# [RC223912]) using MegaTran 2.0 (Cat# [TT210002]).