

## Product datasheet for TP323881L

### alpha Adducin (ADD1) (NM\_001119) Human Recombinant Protein

#### Product data:

Product Type:	Recombinant Proteins
Description:	Recombinant protein of human adducin 1 (alpha) (ADD1), transcript variant 1, 1 mg
Species:	Human
Expression Host:	HEK293T
Expression cDNA Clone or AA Sequence:	>RC223881 representing NM_001119 Red=Cloning site Green=Tags(s)

MNGDSRAAVVTSPPTTAPHKERYFDRVDENNPEYLRERNMAPDLRQDFNMMEQKKRVSMILQSPAFCEE  
LESMIQEQFKKGKNPTGLLALQQIADFMTTNVPNVYPAAPQGGMAALNMSLGMVTPVNDLRGSDSIAYDK  
GEKLLRCKLAAFYRLADLFGWSQLIYNHITRNVSEQEHFLIVPFGLLYSEVTASSLVKINLQGDIVDRG  
STNLGVNQAGFTLHSAIYAARDVKCVWHIHTPAGAASAMKCGLLPISPEALS LGEVAYHDYHGILVDE  
EEKVLIQKNLGPKSKVLILRNHGLVSVGESVEEAFYIHNLVVACEIQVRTLASAGGPDNLVLLNPEKYK  
AKSRSPGSPVGEGTGSPPKWQIGEQEFEALMRMLDNLGYRTGYPYRYPALREKSKKYSDVEVPASVTGYS  
FASDGDGSGTCSPLRHSFQKQREKTRWLN SGRGDEASEEGQNGSSPKSKTKWTKEDGHRTSTS AVPNLFV  
PLNTPKEVQEMRNKIREQNLQDIKTAGPQSQVLCGVMDRSLVQGELVTASKAIIKEYQPHVIVSTTG  
PNPFTTLTDRELEEYRREVERKQKGSEENLDEAREQKEKSPDPQAVPHPPPSTPIKLEEDLVPEPTTGD  
DSDAATFKPTLPDLSPDEPSEALGFPMLEKEEEAHRPPSPTEAPTEASPEPAPDPAPVAEEAAPSVEEG  
AAADPGSDGSPGKSPSKKKKKFRTPSFLKSKKKKSDS

TRTRPLEQKLISEEDLAANDILDYKDDDDKV

Tag:	C-Myc/DDK
Predicted MW:	80.8 kDa
Concentration:	>0.05 µg/µL as determined by microplate BCA method
Purity:	> 80% as determined by SDS-PAGE and Coomassie blue staining
Buffer:	25 mM Tris-HCl, 100 mM glycine, pH 7.3, 10% glycerol
Preparation:	Recombinant protein was captured through anti-DDK affinity column followed by conventional chromatography steps.
Note:	For testing in cell culture applications, please filter before use. Note that you may experience some loss of protein during the filtration process.
Storage:	Store at -80°C.



[View online »](#)

**Stability:** Stable for 12 months from the date of receipt of the product under proper storage and handling conditions. Avoid repeated freeze-thaw cycles.

**RefSeq:** [NP\\_001110](#)

**Locus ID:** 118

**UniProt ID:** [P35611](#)

**RefSeq Size:** 3970

**Cytogenetics:** 4p16.3

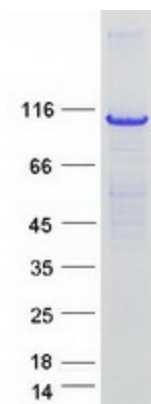
**RefSeq ORF:** 2211

**Synonyms:** ADDA

**Summary:** Adducins are a family of cytoskeletal proteins encoded by three genes (alpha, beta, and gamma). Adducin acts as a heterodimer of the related alpha, beta, or gamma subunits. The protein encoded by this gene represents the alpha subunit. Alpha- and beta-adducin include a protease-resistant N-terminal region and a protease-sensitive, hydrophilic C-terminal region. Adducin binds with high affinity to Ca<sup>2+</sup>/calmodulin and is a substrate for protein kinases A and C. [provided by RefSeq, Aug 2017]

**Protein Families:** Druggable Genome

### Product images:



Coomassie blue staining of purified ADD1 protein (Cat# [TP323881]). The protein was produced from HEK293T cells transfected with ADD1 cDNA clone (Cat# [RC223881]) using MegaTran 2.0 (Cat# [TT210002]).