

## Product datasheet for TP323880M

### SERPINB8 (NM\_002640) Human Recombinant Protein

#### Product data:

<b>Product Type:</b>	Recombinant Proteins
<b>Description:</b>	Recombinant protein of human serpin peptidase inhibitor, clade B (ovalbumin), member 8 (SERPINB8), transcript variant 1, 100 µg
<b>Species:</b>	Human
<b>Expression Host:</b>	HEK293T
<b>Expression cDNA Clone or AA Sequence:</b>	>RC223880 representing NM_002640 <b>Red</b> =Cloning site <b>Green</b> =Tags(s)
	MDDLCEANGTFAISLFKILGEEDNSRNVFFSPMSISSALAMVFMGAKGSTAAQMSQALCLYKDGDIHRGF QSLLEVNRTGTQYLLRTANRLFGEKTCDFLPDFKEYCQKFYQAELEELSFAEDTECRKHINDWVAEKT EGKISEVLDAGTVDPLTKLVLVNAIYFKGKWNEQFDRKYTRGMLFKTNEEKKTQMMFKEAKFKMGYADE VHTQVLELPYVEEELSMVILLPDDNTDLAVVEKALTYEKFAWTNSEKLTKSKVQVFLPRLKLEESYDLE PFLRRLGMIDAFDEAKADFSGMSTTEKNVPLSKVAHKCFVEVNEEGTEAAAAATAVVRNSRCSRMEPRFCAD HPFLFFIRRHKTNCILFCGRFSSP
	<b>TRTRPLEQKLISEEDLAANDILDYKDDDDKV</b>
<b>Tag:</b>	C-Myc/DDK
<b>Predicted MW:</b>	42.6 kDa
<b>Concentration:</b>	>0.05 µg/µL as determined by microplate BCA method
<b>Purity:</b>	> 80% as determined by SDS-PAGE and Coomassie blue staining
<b>Buffer:</b>	25 mM Tris-HCl, 100 mM glycine, pH 7.3, 10% glycerol
<b>Preparation:</b>	Recombinant protein was captured through anti-DDK affinity column followed by conventional chromatography steps.
<b>Note:</b>	For testing in cell culture applications, please filter before use. Note that you may experience some loss of protein during the filtration process.
<b>Storage:</b>	Store at -80°C.
<b>Stability:</b>	Stable for 12 months from the date of receipt of the product under proper storage and handling conditions. Avoid repeated freeze-thaw cycles.
<b>RefSeq:</b>	<u><a href="#">NP_002631</a></u>



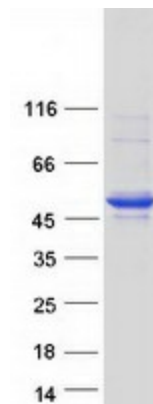
[View online »](#)

Locus ID: 5271  
UniProt ID: [P50452](#), [A0A024R2B1](#), [Q8N178](#)  
RefSeq Size: 3390  
Cytogenetics: 18q22.1  
RefSeq ORF: 1122  
Synonyms: C18orf53; CAP2; PI-8; PI8; PSS5

**Summary:** The protein encoded by this gene is a member of the ov-serpin family of serine protease inhibitors. The encoded protein is produced by platelets and can bind to and inhibit the function of furin, a serine protease involved in platelet functions. In addition, this protein has been found to enhance the mechanical stability of cell-cell adhesion in the skin, and defects in this gene have been associated with an autosomal-recessive form of exfoliative ichthyosis. [provided by RefSeq, Jan 2017]

**Protein Families:** Druggable Genome

### Product images:



Coomassie blue staining of purified SERPINB8 protein (Cat# [TP323880]). The protein was produced from HEK293T cells transfected with SERPINB8 cDNA clone (Cat# [RC223880]) using MegaTran 2.0 (Cat# [TT210002]).