

Product datasheet for **TP323868**

CFHR5 (NM_030787) Human Recombinant Protein

Product data:

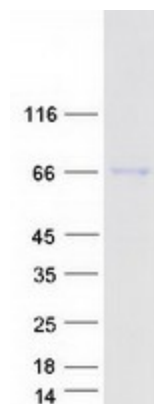
Product Type:	Recombinant Proteins
Description:	Recombinant protein of human complement factor H-related 5 (CFHR5), 20 µg
Species:	Human
Expression Host:	HEK293T
Expression cDNA Clone or AA Sequence:	>RC223868 representing NM_030787 Red =Cloning site Green =Tags(s)
	<p>MLLLFSVILISWVSTVGGEGTLCDFPKIHGFLYDEEDYNPFSQVPTGEVFYYSCEYNFVSPSKSFWTRI TCTEEGWSPTPKCLRMCSFPVKNHGHESSGLIHLEGDTVQIICNTGYSLQNNNEKNISCVERGWSTPPIC SFTKGECHVPILEANVDAQPKKESYKVGDLKFCRKNLIRVGSQVQCYQFGWSPNFPTCKGQVRSCGP PPQLSNGEVKEIRKKEYGHNEVVEYDCNPNFIINGPKKIQCVDGEWTTLPTCQEYVKTGCIPELEYGYV QPSVPPYQHGVSVVNCRNEYAMIGNMITCINGIWTELPVCVATHQLKRCKIAGVNIKTLLKLSGKEFN HNSRIRYRCSDFIRYRHSVCINGKWNPEVDCTEKREQFCPPPPQIPNAQNMTTTVNYQDGEKVAVLCKEN YLLPEAKEIVCKDGRWQSLPRCVSTAYCGPPPSINNGDTSFPLSVYPPGSTVYRCQSFYKLQGSVTV TCRNKQWSEPPRCLDPCVSEENMNKNNIQLKWRNDGKLYAKTGDAVEFQCKFPHKAMISSPPFRAICQE GKFEYPICE</p> <p>TRTRPLEQKLISEEDLAANDILDYKDDDDKV</p>
Tag:	C-Myc/DDK
Predicted MW:	62.5 kDa
Concentration:	>0.05 µg/µL as determined by microplate BCA method
Purity:	> 80% as determined by SDS-PAGE and Coomassie blue staining
Buffer:	25 mM Tris-HCl, 100 mM glycine, pH 7.3, 10% glycerol
Preparation:	Recombinant protein was captured through anti-DDK affinity column followed by conventional chromatography steps.
Note:	For testing in cell culture applications, please filter before use. Note that you may experience some loss of protein during the filtration process.
Storage:	Store at -80°C.



[View online »](#)

Stability:	Stable for 12 months from the date of receipt of the product under proper storage and handling conditions. Avoid repeated freeze-thaw cycles.
RefSeq:	NP_110414
Locus ID:	81494
UniProt ID:	Q9BXR6
RefSeq Size:	2823
Cytogenetics:	1q31.3
RefSeq ORF:	1707
Synonyms:	CFHL5; CFHR5D; FHR-5; FHR5
Summary:	This gene is a member of a small complement factor H (CFH) gene cluster on chromosome 1. Each member of this gene family contains multiple short consensus repeats (SCRs) typical of regulators of complement activation. The protein encoded by this gene has nine SCRs with the first two repeats having heparin binding properties, a region within repeats 5-7 having heparin binding and C reactive protein binding properties, and the C-terminal repeats being similar to a complement component 3 b (C3b) binding domain. This protein co-localizes with C3, binds C3b in a dose-dependent manner, and is recruited to tissues damaged by C-reactive protein. Allelic variations in this gene have been associated, but not causally linked, with two different forms of kidney disease: membranoproliferative glomerulonephritis type II (MPGNII) and hemolytic uraemic syndrome (HUS). [provided by RefSeq, Jan 2010]
Protein Families:	Secreted Protein, Transmembrane

Product images:



Coomassie blue staining of purified CFHR5 protein (Cat# TP323868). The protein was produced from HEK293T cells transfected with CFHR5 cDNA clone (Cat# [RC223868]) using MegaTran 2.0 (Cat# [TT210002]).