

## Product datasheet for **TP323852M**

### **BTN1A1 (NM\_001732) Human Recombinant Protein**

#### Product data:

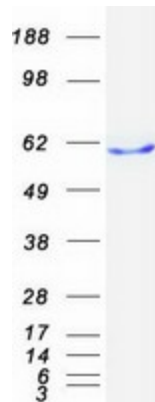
Product Type:	Recombinant Proteins
Description:	Recombinant protein of human butyrophilin, subfamily 1, member A1 (BTN1A1), 100 µg
Species:	Human
Expression Host:	HEK293T
Expression cDNA Clone or AA Sequence:	>RC223852 representing NM_001732 <b>Red</b> =Cloning site <b>Green</b> =Tags(s)
	<p>MAVFPSSGLPRCLLTLLQLPKLDSAPFDVIGPPEPILAVVGEDAELPCRLSPNASAEHLELRWFRKKV SPAVLVHRDGREQAEQMPEYRGRATLVQDGIAGKGRVALRIRGVRVSDDGEYTCFFREDGGSYEEALVHLK VAALGSDPHISMQVQENGEICLECTSVGWYPEPQVQWRTSKGEKFPSTSES RNPDEEGLFTVAASVIIRD TSTKNVSCYIQNLLLQGEKKVEISIPASSLPRLTPWIVAVAVILMVLGLLTIGSIFFTWRLYNERPRERR NEFSSKERLLEELKWKKATLHAVDVTLDPDTAHPHFLYEDSKSVRLED SRQKLPKTERFDSWPCVLGR ETFTSGRHYWEVEVGDRTDWAIGVCRENVMKKGFDPMTPENGFWAVELYGNGYWALTPLRTPPLAGP PR RVGIFLDYESGDISFYNMNDGSDIYTFSNVTFSGLRPFCLWSSGKKPLTICPIADGPERVTVIANAQD LSKEIPLSPMGEESAPRDADTLHSKLIPTQPSQGAP</p> <p><b>TRTRPLEQKLISEEDLAANDILDYKDDDDKV</b></p>
Tag:	C-Myc/DDK
Predicted MW:	58.8 kDa
Concentration:	>0.05 µg/µL as determined by microplate BCA method
Purity:	> 80% as determined by SDS-PAGE and Coomassie blue staining
Buffer:	25 mM Tris-HCl, 100 mM glycine, pH 7.3, 10% glycerol
Preparation:	Recombinant protein was captured through anti-DDK affinity column followed by conventional chromatography steps.
Note:	For testing in cell culture applications, please filter before use. Note that you may experience some loss of protein during the filtration process.
Storage:	Store at -80°C.



[View online »](#)

<b>Stability:</b>	Stable for 12 months from the date of receipt of the product under proper storage and handling conditions. Avoid repeated freeze-thaw cycles.
<b>RefSeq:</b>	<a href="#">NP_001723</a>
<b>Locus ID:</b>	696
<b>UniProt ID:</b>	<a href="#">Q13410</a>
<b>RefSeq Size:</b>	2901
<b>Cytogenetics:</b>	6p22.2
<b>RefSeq ORF:</b>	1578
<b>Synonyms:</b>	BT; BTN; BTN1
<b>Summary:</b>	Butyrophilin is the major protein associated with fat droplets in the milk. It is a member of the immunoglobulin superfamily. It may have a cell surface receptor function. The human butyrophilin gene is localized in the major histocompatibility complex (MHC) class I region of 6p and may have arisen relatively recently in evolution by the shuffling of exons between 2 ancestral gene families [provided by RefSeq, Jul 2008]
<b>Protein Families:</b>	Druggable Genome, Transmembrane

### Product images:



Coomassie blue staining of purified BTN1A1 protein (Cat# [TP323852]). The protein was produced from HEK293T cells transfected with BTN1A1 cDNA clone (Cat# [RC223852]) using MegaTran 2.0 (Cat# [TT210002]).