

Product datasheet for **TP323852L**

BTN1A1 (NM_001732) Human Recombinant Protein

Product data:

Product Type: Recombinant Proteins

Description: Recombinant protein of human butyrophilin, subfamily 1, member A1 (BTN1A1), 1 mg

Species: Human

Expression Host: HEK293T

Expression cDNA Clone or AA Sequence: >RC223852 representing NM_001732

Red=Cloning site **Green**=Tags(s)

MAVFPSSGLPRCLLTLILLQLPKLDSAPFDVIGPPEPILAVVGEDAELPCRLSPNASAEHLELRWFRKKV
SPAVLVHRDGREQAEQMPEYRGRATLVQDGIAGRVALRIRGVRVSDDGEYTCFFREDGSEYEEALVHLK
VAALGSDPHISMQVQENGEICLECTSVGWYEPQVQWRVTSKGEKFPSTSESRNPDEEGLFTVAASVIIRD
TSTKNVSCYIQNLLLGQEKKVEISIPASSLPRLTPWIVAVAVILMVLGLLTIGSIFFTWRLYNERPRERR
NEFSSKERLLEELKWKKATLHAVDVTLPDPTAHPHFLYEDSKSVRLEDSRQKLPEKTERFDSWPCVLGR
ETFTSGRHYWEVEVGDRTDWAIGVCRENVMKKGFDPMPENGFWAVELYGNGYWALTPLRTPPLAGPPR
RVGIFLDYESGDISFYNMNDGSDIYFNSVTFSGPLRPFCLWSSGKKPLTICPIADGPERVTVIANAQD
LSKEIPLSPMGEESAPRDADTLHSKLIPTQPSQGAP

TRTRPLEQKLISEEDLAANDILDYKDDDDKV

Tag: C-Myc/DDK

Predicted MW: 58.8 kDa

Concentration: >0.05 µg/µL as determined by microplate BCA method

Purity: > 80% as determined by SDS-PAGE and Coomassie blue staining

Buffer: 25 mM Tris-HCl, 100 mM glycine, pH 7.3, 10% glycerol

Preparation: Recombinant protein was captured through anti-DDK affinity column followed by conventional chromatography steps.

Note: For testing in cell culture applications, please filter before use. Note that you may experience some loss of protein during the filtration process.

Storage: Store at -80°C.

Stability: Stable for 12 months from the date of receipt of the product under proper storage and handling conditions. Avoid repeated freeze-thaw cycles.



[View online »](#)

RefSeq: [NP_001723](#)

Locus ID: 696

UniProt ID: [Q13410](#), [Q4VAN2](#)

RefSeq Size: 2901

Cytogenetics: 6p22.2

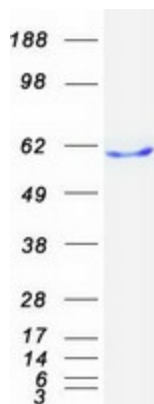
RefSeq ORF: 1578

Synonyms: BT; BTN; BTN1

Summary: Butyrophilin is the major protein associated with fat droplets in the milk. It is a member of the immunoglobulin superfamily. It may have a cell surface receptor function. The human butyrophilin gene is localized in the major histocompatibility complex (MHC) class I region of 6p and may have arisen relatively recently in evolution by the shuffling of exons between 2 ancestral gene families [provided by RefSeq, Jul 2008]

Protein Families: Druggable Genome, Transmembrane

Product images:



Coomassie blue staining of purified BTN1A1 protein (Cat# [TP323852]). The protein was produced from HEK293T cells transfected with BTN1A1 cDNA clone (Cat# [RC223852]) using MegaTran 2.0 (Cat# [TT210002]).