

## Product datasheet for **TP323852**

### BTN1A1 (NM\_001732) Human Recombinant Protein

#### Product data:

**Product Type:** Recombinant Proteins

**Description:** Recombinant protein of human butyrophilin, subfamily 1, member A1 (BTN1A1), 20 µg

**Species:** Human

**Expression Host:** HEK293T

**Expression cDNA Clone** >RC223852 representing NM\_001732

**or AA Sequence:** **Red**=Cloning site **Green**=Tags(s)

MAVFPSSGLPRCLLTLILLQLPKLDSAPFDVIGPPEPILAVVGEDAELPCRLSPNASAEHLELRWFRKKV  
 SPAVLVHRDGREQAEQMPEYRGRATLVQDGIAGRVALRIRGVRVSDDGEYTCFFREDGSEYEEALVHLK  
 VAALGSDPHISMQVQENGEICLECTSVGWYEPQVQWRVTSKGEKFPSTSESRNPDEEGLFTVAASVIIRD  
 TSTKNVSCYIQNLLLGQEKKVEISIPASSLPRLTPWIVAVAVILMVLGLLTIGSIFFTWRLYNERPRRR  
 NEFSSKERLLEELKWKKATLHAVDVTLDPDTAHPHFLYEDSKSVRLEDSRQKLPEKTERFDSWPCVLGR  
 ETFTSGRHYWEVEVGDRTDWAIGVCRENVMKKGFDPMPENGFWAVELYGNGYWALTPLRTPPLAGPPR  
 RVGIFLDYESGDISFYNMNDGSDIYFNSVTFSGPLRPFCLWSSGKKPLTICPIADGPERVTVIANAQD  
 LSKEIPLSPMGEESAPRDADTLHSKLIPTQPSQGAP

**TRTRPLEQKLISEEDLAANDILDYKDDDDKV**

**Tag:** C-Myc/DDK

**Predicted MW:** 58.8 kDa

**Concentration:** >0.05 µg/µL as determined by microplate BCA method

**Purity:** > 80% as determined by SDS-PAGE and Coomassie blue staining

**Buffer:** 25 mM Tris-HCl, 100 mM glycine, pH 7.3, 10% glycerol

**Preparation:** Recombinant protein was captured through anti-DDK affinity column followed by conventional chromatography steps.

**Note:** For testing in cell culture applications, please filter before use. Note that you may experience some loss of protein during the filtration process.

**Storage:** Store at -80°C.

**Stability:** Stable for 12 months from the date of receipt of the product under proper storage and handling conditions. Avoid repeated freeze-thaw cycles.



[View online »](#)

RefSeq: [NP\\_001723](#)

Locus ID: 696

UniProt ID: [Q13410](#), [Q4VAN2](#)

RefSeq Size: 2901

Cytogenetics: 6p22.2

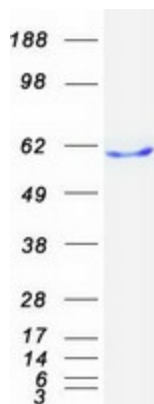
RefSeq ORF: 1578

Synonyms: BT; BTN; BTN1

**Summary:** Butyrophilin is the major protein associated with fat droplets in the milk. It is a member of the immunoglobulin superfamily. It may have a cell surface receptor function. The human butyrophilin gene is localized in the major histocompatibility complex (MHC) class I region of 6p and may have arisen relatively recently in evolution by the shuffling of exons between 2 ancestral gene families [provided by RefSeq, Jul 2008]

**Protein Families:** Druggable Genome, Transmembrane

### Product images:



Coomassie blue staining of purified BTN1A1 protein (Cat# TP323852). The protein was produced from HEK293T cells transfected with BTN1A1 cDNA clone (Cat# [RC223852]) using MegaTran 2.0 (Cat# [TT210002]).