

Product datasheet for TP323846

MMACHC (NM_015506) Human Recombinant Protein

Product data:

Product Type:	Recombinant Proteins
Description:	Recombinant protein of human methylmalonic aciduria (cobalamin deficiency) cblC type, with homocystinuria (MMACHC), 20 µg
Species:	Human
Expression Host:	HEK293T
Expression cDNA Clone or AA Sequence:	>RC223846 representing NM_015506 Red=Cloning site Green=Tags(s)

MEPKVAELKQKIEDTLCPFGEVYPFQVAWYNELLPPAFHLPLPGPTLAFLVLSTPAMFDRALKPFLQSC
HLRMLTDPVDQCVAYHLGRVRESLPELQIEIIADYEVHPNRRPKILAQTAHVAGAAAYYQRQDVEADPW
GNQRISGVCIHPRFGGWFAIRGVLLPGIEVPDLPPRKP HDCVPTRADRIALLEGFNHWRDWTYRDAVT
PQERYSEEQKAYFSTPPAQRLLALLGLAQPSEKPSPPDLPTTPAPKKPGNPSRARSWLSRVSPASP
GP

TRTRPLEQKLISEEDLAANDILDYKDDDDKV

Tag:	C-Myc/DDK
Predicted MW:	31.5 kDa
Concentration:	>0.05 µg/µL as determined by microplate BCA method
Purity:	> 80% as determined by SDS-PAGE and Coomassie blue staining
Buffer:	25 mM Tris-HCl, 100 mM glycine, pH 7.3, 10% glycerol
Preparation:	Recombinant protein was captured through anti-DDK affinity column followed by conventional chromatography steps.
Note:	For testing in cell culture applications, please filter before use. Note that you may experience some loss of protein during the filtration process.
Storage:	Store at -80°C.
Stability:	Stable for 12 months from the date of receipt of the product under proper storage and handling conditions. Avoid repeated freeze-thaw cycles.
RefSeq:	NP_056321
Locus ID:	25974



[View online »](#)

UniProt ID: [Q9Y4U1](#)

RefSeq Size: 2247

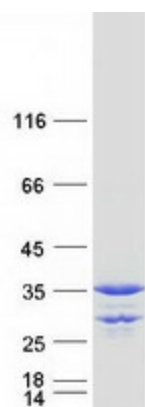
Cytogenetics: 1p34.1

RefSeq ORF: 846

Synonyms: cblC

Summary: The exact function of the protein encoded by this gene is not known, however, its C-terminal region shows similarity to TonB, a bacterial protein involved in energy transduction for cobalamin (vitamin B12) uptake. Hence, it is postulated that this protein may have a role in the binding and intracellular trafficking of cobalamin. Mutations in this gene are associated with methylmalonic aciduria and homocystinuria type cblC. [provided by RefSeq, Oct 2009]

Product images:



Coomassie blue staining of purified MMACHC protein (Cat# TP323846). The protein was produced from HEK293T cells transfected with MMACHC cDNA clone (Cat# [RC223846]) using MegaTran 2.0 (Cat# [TT210002]).