

Product datasheet for **TP323826M**

CUX1 (NM_001913) Human Recombinant Protein

Product data:

Product Type:	Recombinant Proteins
Description:	Recombinant protein of human cut-like homeobox 1 (CUX1), transcript variant 2, 100 µg
Species:	Human
Expression Host:	HEK293T
Expression cDNA Clone or AA Sequence:	>RC223826 representing NM_001913 Red=Cloning site Green=Tags(s)

MAANVGSMFYWKRFDLQQLQRELDATATVLANRQDESESRKRLIEQSREFKNTPEDLRKQVAPLLKS
FQGEIDALSKRSKEAEEAFLNVYKRLIDVDPVDPALDLGQQLQKLVQRLHDIETENQKLRETLEEYKNEF
AEVKNQEVTIKALKEKIREYEQTLKNQAETIALEKEQKLQNDFAEKERKLQETQMSTTSKLEEAHKVQS
LQTALEKTRTEFLDKTKYDEETTAKADEIEMIMTDLERANQRAEVAQREAEATLREQLSSANHSLQLASQ
IQKAPDVEQAIEVLTRSSLEVELAAKEREIAQLVEDVQRLQASLTKLRENSASQISQLEQQLSAKNSTLK
QLEEKLGQADYEEVKKELNILKSMEFAPSEGAGTQDAAKPLEVLLLEKNRSLQSENAALRISNSDLSGR
CAELQVRITEAVATATEQRELIARLEQDLSIIQSIQRPDAEGAAEHRLEKIPEPIKEATALFYGPAAPAS
GALPEGQVDSLLSISSQRERFRARNQELEAENRLAQHTLQALQSELSLRADNIKLFKIKFLQSYPGR
GSGSDDTELRYSSQYEERLDPFSSFSKRERQRKYLSLSPWDKATLSMGRVLVSNKMARTIGFFYTLFLHC
LVFLVLYKLAWSESMERDCATFCAKKFADHLHKFHENDNGAAAGDLWQ

TRTRPLEQKLISEEDLAANDILDYKDDDDKV

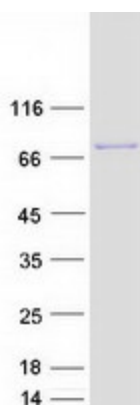
Tag:	C-Myc/DDK
Predicted MW:	77.3 kDa
Concentration:	>0.05 µg/µL as determined by microplate BCA method
Purity:	> 80% as determined by SDS-PAGE and Coomassie blue staining
Buffer:	25 mM Tris-HCl, 100 mM glycine, pH 7.3, 10% glycerol
Preparation:	Recombinant protein was captured through anti-DDK affinity column followed by conventional chromatography steps.
Note:	For testing in cell culture applications, please filter before use. Note that you may experience some loss of protein during the filtration process.
Storage:	Store at -80°C.



[View online »](#)

Stability:	Stable for 12 months from the date of receipt of the product under proper storage and handling conditions. Avoid repeated freeze-thaw cycles.
RefSeq:	NP_001904
Locus ID:	1523
UniProt ID:	Q13948
RefSeq Size:	2942
Cytogenetics:	7q22.1
RefSeq ORF:	2034
Synonyms:	CASP; CDP; CDP/Cut; CDP1; Clox; COY1; CUTL1; CUX; Cux/CDP; GDDI; GOLIM6; Nbla10317; p75; p100; p110; p200
Summary:	The protein encoded by this gene is a member of the homeodomain family of DNA binding proteins. It may regulate gene expression, morphogenesis, and differentiation and it may also play a role in the cell cycle progression. Several alternatively spliced transcript variants encoding different isoforms have been identified.[provided by RefSeq, Feb 2011]
Protein Families:	Transcription Factors, Transmembrane

Product images:



Coomassie blue staining of purified CUX1 protein (Cat# [TP323826]). The protein was produced from HEK293T cells transfected with CUX1 cDNA clone (Cat# [RC223826]) using MegaTran 2.0 (Cat# [TT210002]).