

## Product datasheet for TP323826L

### CUX1 (NM\_001913) Human Recombinant Protein

#### Product data:

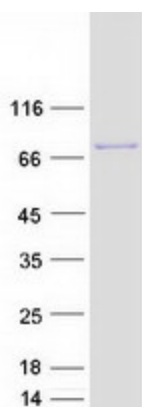
<b>Product Type:</b>	Recombinant Proteins
<b>Description:</b>	Recombinant protein of human cut-like homeobox 1 (CUX1), transcript variant 2, 1 mg
<b>Species:</b>	Human
<b>Expression Host:</b>	HEK293T
<b>Expression cDNA Clone or AA Sequence:</b>	>RC223826 representing NM_001913 <b>Red</b> =Cloning site <b>Green</b> =Tags(s)
	<p>MAANVGSMFYWKRFDLQQLQRELDATATVLANRQDESESRKRLIEQSREFKNTPEDLRKQVAPLLKS            FQGEIDALSKRSKEAEEAFLNVYKRLIDVDPVPALDLGQQLQKLVQRLHDIETENQKLRETLEEYNKEF            AEVKNQEVTIKALKEKIREYEQTLKNQAETIALEKEQKLQNDFAEKERKLQETQMSTTSKLEEAHKVQS            LQTALEKTRTEFLDKTKYDEETTAKADEIEMIMTDLERANQRAEVAQREAEATLREQLSSANHSLQLASQ            IQKAPDVEQAIEVLTRSSLEVELAAKEREIAQLVEDVQRLQASLTKLRENSASQISQLEQQLSAKNSTLK            QLEEKLGQADYEEVKKELNILKSMEFAPSEGAGTQDAAKPLEVLLLEKNRSLQSENAALRISNSDLSGR            CAELQVRITEAVATATEQRELIARLEQDLSIIQSIQRPDAEGAAEHRLEKIPEPIKEATALFYGPAAPAS            GALPEGQVDSLLSISSQRERFRARNQELEAENRLAQHTLQALQSELDSLADNIKLFKIKFLQSYPPGR            GSGSDDTELRYSSQYEERLDPFSSFSKRERQRKYLSLSPWDKATLSMGRLLVLSNKMARTIGFFYTLFLHC            LVFLVLYKLAWSESMERDCATFCAKKFADHLHKFHENDNGAAAGDLWQ</p> <p><b>TRTRPLEQKLISEEDLAANDILDYKDDDDKV</b></p>
<b>Tag:</b>	C-Myc/DDK
<b>Predicted MW:</b>	77.3 kDa
<b>Concentration:</b>	>0.05 µg/µL as determined by microplate BCA method
<b>Purity:</b>	> 80% as determined by SDS-PAGE and Coomassie blue staining
<b>Buffer:</b>	25 mM Tris-HCl, 100 mM glycine, pH 7.3, 10% glycerol
<b>Preparation:</b>	Recombinant protein was captured through anti-DDK affinity column followed by conventional chromatography steps.
<b>Note:</b>	For testing in cell culture applications, please filter before use. Note that you may experience some loss of protein during the filtration process.
<b>Storage:</b>	Store at -80°C.



[View online »](#)

<b>Stability:</b>	Stable for 12 months from the date of receipt of the product under proper storage and handling conditions. Avoid repeated freeze-thaw cycles.
<b>RefSeq:</b>	<u>NP_001904</u>
<b>Locus ID:</b>	1523
<b>UniProt ID:</b>	<u>Q13948</u>
<b>RefSeq Size:</b>	2942
<b>Cytogenetics:</b>	7q22.1
<b>RefSeq ORF:</b>	2034
<b>Synonyms:</b>	CASP; CDP; CDP/Cut; CDP1; Clox; COY1; CUTL1; CUX; Cux/CDP; GDDI; GOLIM6; Nbla10317; p75; p100; p110; p200
<b>Summary:</b>	The protein encoded by this gene is a member of the homeodomain family of DNA binding proteins. It may regulate gene expression, morphogenesis, and differentiation and it may also play a role in the cell cycle progression. Several alternatively spliced transcript variants encoding different isoforms have been identified.[provided by RefSeq, Feb 2011]
<b>Protein Families:</b>	Transcription Factors, Transmembrane

### Product images:



Coomassie blue staining of purified CUX1 protein (Cat# [TP323826]). The protein was produced from HEK293T cells transfected with CUX1 cDNA clone (Cat# [RC223826]) using MegaTran 2.0 (Cat# [TT210002]).