

Product datasheet for TP323778

LRSAM1 (NM_001005374) Human Recombinant Protein

Product data:

Product Type:	Recombinant Proteins
Description:	Recombinant protein of human leucine rich repeat and sterile alpha motif containing 1 (LRSAM1), transcript variant 3, 20 µg
Species:	Human
Expression Host:	HEK293T
Expression cDNA Clone or AA Sequence:	>RC223778 protein sequence Red=Cloning site Green=Tags(s)

MPLFFRKRKPSEEARKRLEYQMCLAKEAGADDILDISKCELSSEIPFGAFATCKVLQKKVLIVHTNHLTSL
LPKSCSLLSLATIKVLDLHDNQLTALPDDLGLTALQVLNVERNQLMQLPRSIGNLTQLQTLNVKDNKLL
ELPDTVGELRSLRTLNIISGNEIQRLPQMLAHVRTLEMLSLDASAMVYPPREVCGAGTAAILQFLCKESGL
EYPPSQYLLPILEQDGIENSRRDSDPGPTDRFSREELEWQNRFSQDYEKREKQKMLEKLEFERRLELQRE
HTQLLQSSSQKDEILQTVKEEQSRLEQGLSEHQRHDAERQRLQEQLKQTEQNISSRIQKLLQDNQRQK
KSSEILKSLENERIRMEQLMSITQEETESLRRRDVASAMQQMLTESCKNRLIQMAYESQRQNLVQQACSS
MAEMDERFQQILSWQQMDQNKAIQILQESAMQKAFAEALQVKKDLMHRQIRSIKLIETELLQTLQLEL
KRKSLDTESLQEMISEQRWALSLLQQLLKEKQQRREEELREILTELEAKSETRQENYWLIQYQRLNQP
LSLKLQEEGMRQLVALLEELSAEHYLPFAHHRSLDLSQMSPGDLAKVGVSEAGLQHEILRRVQELL
DAARIQPELKPPMGEVVTPTAPQEPPEVSRPSAPPAELEVQASECVCLEREAQMIFLNCGHVCCQCC
QPLRTCPLCRQDIAQRLRIYHSS

TRTRPLEQKLISEEDLAANDILDYKDDDDKV

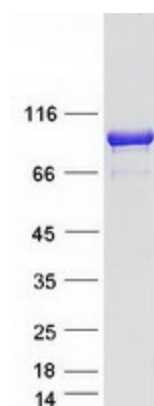
Tag:	C-Myc/DDK
Predicted MW:	83.4 kDa
Concentration:	>0.05 µg/µL as determined by microplate BCA method
Purity:	> 80% as determined by SDS-PAGE and Coomassie blue staining
Buffer:	25 mM Tris-HCl, 100 mM glycine, pH 7.3, 10% glycerol
Preparation:	Recombinant protein was captured through anti-DDK affinity column followed by conventional chromatography steps.
Note:	For testing in cell culture applications, please filter before use. Note that you may experience some loss of protein during the filtration process.



[View online »](#)

Storage:	Store at -80°C.
Stability:	Stable for 12 months from the date of receipt of the product under proper storage and handling conditions. Avoid repeated freeze-thaw cycles.
RefSeq:	NP_001005374
Locus ID:	90678
UniProt ID:	Q6UWE0 , A0A024R870
RefSeq Size:	2851
Cytogenetics:	9q33.3-q34.11
RefSeq ORF:	2169
Synonyms:	CMT2P; RIFLE; TAL
Summary:	This gene encodes a ring finger protein involved in a variety of functions, including regulation of signaling pathways and cell adhesion, mediation of self-ubiquitylation, and involvement in cargo sorting during receptor endocytosis. Mutations in this gene have been associated with Charcot-Marie-Tooth disease. Multiple transcript variants encoding different isoforms have been identified for this gene. [provided by RefSeq, Jan 2012]
Protein Families:	Druggable Genome

Product images:



Coomassie blue staining of purified LRSAM1 protein (Cat# TP323778). The protein was produced from HEK293T cells transfected with LRSAM1 cDNA clone (Cat# [RC223778]) using MegaTran 2.0 (Cat# [TT210002]).