

## Product datasheet for **TP323777**

### beta Casein (CSN2) (NM\_001891) Human Recombinant Protein

#### Product data:

Product Type: Recombinant Proteins

Description: Recombinant protein of human casein beta (CSN2), 20 µg

Species: Human

Expression Host: HEK293T

Expression cDNA Clone  
or AA Sequence: >RC223777 protein sequence  
**Red**=Cloning site **Green**=Tags(s)

MKVLILACLVALALARETIESLSSEESITEYKQKVEKVKHEDQQQGEDEHQDKIYPSFQPQPLIYPFVE  
PIPYGFLPQNILPLAQPAVWLPVPQPEIMEVPKAKDTVYTKGRVMPVLKSPTIPFFDPQIPKLTDLNLH  
LPLPLLQPLMQVPQPIPQTLALPPQLWSVPQPKVLPQPQVVPYQRAVPVQALLNQELLNPTHQI  
YPVTQPLAPVHNPISV

**TRTRPLEQKLISEEDLAANDILDYKDDDDKV**

Tag: C-Myc/DDK

Predicted MW: 25.2 kDa

Concentration: >0.05 µg/µL as determined by microplate BCA method

Purity: > 80% as determined by SDS-PAGE and Coomassie blue staining

Buffer: 25 mM Tris-HCl, 100 mM glycine, pH 7.3, 10% glycerol

Preparation: Recombinant protein was captured through anti-DDK affinity column followed by conventional chromatography steps.

Note: For testing in cell culture applications, please filter before use. Note that you may experience some loss of protein during the filtration process.

Storage: Store at -80°C.

Stability: Stable for 12 months from the date of receipt of the product under proper storage and handling conditions. Avoid repeated freeze-thaw cycles.

RefSeq: [NP\\_001882](#)

Locus ID: 1447

UniProt ID: [P05814](#), [W5RWE1](#)



[View online >](#)

RefSeq Size: 1078

Cytogenetics: 4q13.3

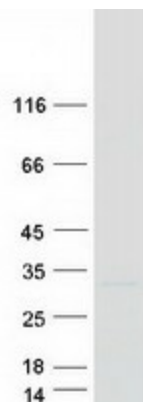
RefSeq ORF: 678

Synonyms: CASB; PDC213

**Summary:** This gene is a member of the beta casein family. There are two types of casein protein, beta (encoded by this gene) and kappa, both of which are secreted in human milk. Beta casein is the principal protein in human milk and the primary source of essential amino acids for a suckling infant. Beta and kappa casein proteins acting together form spherical micelles which bind within them important dietary minerals, such as calcium and phosphorous. In addition, the C-terminal 14 aa of the protein has antimicrobial activity, especially in preterm milk, displaying antibacterial activity against *S. aureus* and *Y. enterocolitica*. Alternative splicing results in multiple transcript variants. [provided by RefSeq, Jul 2020]

**Protein Families:** Secreted Protein

### Product images:



Coomassie blue staining of purified CSN2 protein (Cat# TP323777). The protein was produced from HEK293T cells transfected with CSN2 cDNA clone (Cat# [RC223777]) using MegaTran 2.0 (Cat# [TT210002]).