

## Product datasheet for **TP323756M**

### PRR20A (NM\_198441) Human Recombinant Protein

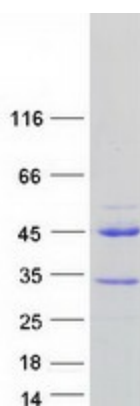
#### Product data:

Product Type:	Recombinant Proteins
Description:	Recombinant protein of human proline rich 20 (PRR20), 100 µg
Species:	Human
Expression Host:	HEK293T
Expression cDNA Clone or AA Sequence:	>RC223756 protein sequence <span style="color: red;">Red</span> =Cloning site <span style="color: green;">Green</span> =Tags(s)  MEEPRPSKRLRSMAPNQASGGPPPEPGCCVADPEGSVEADGPAQPAQPAKPIAYVKPFRRQPPARPESP P PAERGRRRGSSRRPGRGRRRAGPRGDAGQRQGAEGLMAPDVHIQLDHHGEPGHQGEPEITETAAFSL E TGPPPGTVQEGPGPDVAQPELGFQEPPAAPGPQAVDWQPVLTLYPCIGFRALGDSAVLQVIQTPQGTYV Q GVPVFLTDIAY  <span style="color: red;">TR</span> <span style="color: green;">TRPLEQKLISEEDLAANDILDYKDDDDKV</span>
Tag:	C-Myc/DDK
Predicted MW:	23.1 kDa
Concentration:	>0.05 µg/µL as determined by microplate BCA method
Purity:	> 80% as determined by SDS-PAGE and Coomassie blue staining
Buffer:	25 mM Tris-HCl, 100 mM glycine, pH 7.3, 10% glycerol
Preparation:	Recombinant protein was captured through anti-DDK affinity column followed by conventional chromatography steps.
Note:	For testing in cell culture applications, please filter before use. Note that you may experience some loss of protein during the filtration process.
Storage:	Store at -80°C.
Stability:	Stable for 12 months from the date of receipt of the product under proper storage and handling conditions. Avoid repeated freeze-thaw cycles.
RefSeq:	<u><a href="#">NP_940843</a></u>


[View online »](#)

Locus ID:	122183
UniProt ID:	<a href="#">P86496</a>
RefSeq Size:	1847
Cytogenetics:	13q21.1
RefSeq ORF:	663
Synonyms:	PRR20; PRR20B; PRR20C; PRR20D; PRR20E
Summary:	This gene is one of five identical loci in a cluster on chromosome 13q21.1. The predicted protein is proline-rich and contains several dopamine D4 receptor signatures and PRINTS domains. [provided by RefSeq, Oct 2008]

### Product images:



Coomassie blue staining of purified PRR20A protein (Cat# [TP323756]). The protein was produced from HEK293T cells transfected with PRR20A cDNA clone (Cat# [RC223756]) using MegaTran 2.0 (Cat# [TT210002]).