

Product datasheet for **TP323756**

PRR20A (NM_198441) Human Recombinant Protein

Product data:

Product Type: Recombinant Proteins

Description: Recombinant protein of human proline rich 20 (PRR20), 20 µg

Species: Human

Expression Host: HEK293T

Expression cDNA Clone >RC223756 protein sequence

or AA Sequence: **Red**=Cloning site **Green**=Tags(s)

MEEPRPSKRLRSMAPNQASGGPPPEPGCCVADPEGSVEADGPAQPAQPAKPIAYVKPFRRQPPARPESPP
PAERGRRRGGSSRRPGRGRGRRRAGPRGDAGQRQGAEGLMAPDVHIQLDHHGEPGHQGEPEITETAAFSLSE
TGPPPGTVQEGPGPDVAQPELGFQEPAAAPGPQAVDWQPVLTLYPCIGFRALGDSAVLQVIQTPQGTYVQ
GVPVFLTDIAY

TRTRPLEQKLISEEDLAANDILDYKDDDDKV

Tag: C-Myc/DDK

Predicted MW: 23.1 kDa

Concentration: >0.05 µg/µL as determined by microplate BCA method

Purity: > 80% as determined by SDS-PAGE and Coomassie blue staining

Buffer: 25 mM Tris-HCl, 100 mM glycine, pH 7.3, 10% glycerol

Preparation: Recombinant protein was captured through anti-DDK affinity column followed by conventional chromatography steps.

Note: For testing in cell culture applications, please filter before use. Note that you may experience some loss of protein during the filtration process.

Storage: Store at -80°C.

Stability: Stable for 12 months from the date of receipt of the product under proper storage and handling conditions. Avoid repeated freeze-thaw cycles.

RefSeq: [NP_940843](#)

Locus ID: 122183

UniProt ID: [P86496](#), [P86481](#), [P86479](#), [P86480](#), [P86478](#)



[View online >](#)

RefSeq Size: 1847

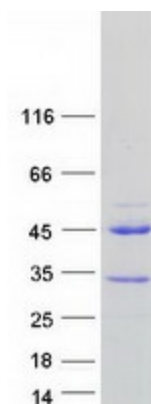
Cytogenetics: 13q21.1

RefSeq ORF: 663

Synonyms: PRR20; PRR20B; PRR20C; PRR20D; PRR20E

Summary: This gene is one of five identical loci in a cluster on chromosome 13q21.1. The predicted protein is proline-rich and contains several dopamine D4 receptor signatures and PRINTS domains. [provided by RefSeq, Oct 2008]

Product images:



Coomassie blue staining of purified PRR20A protein (Cat# TP323756). The protein was produced from HEK293T cells transfected with PRR20A cDNA clone (Cat# [RC223756]) using MegaTran 2.0 (Cat# [TT210002]).