

Product datasheet for **TP323753M**

EVA1 (MPZL2) (NM_144765) Human Recombinant Protein

Product data:

Product Type:	Recombinant Proteins
Description:	Recombinant protein of human myelin protein zero-like 2 (MPZL2), transcript variant 2, 100 µg
Species:	Human
Expression Host:	HEK293T
Expression cDNA Clone or AA Sequence:	>RC223753 protein sequence Red =Cloning site Green =Tags(s)

MYGKSSTRAVLLLLGIQLTALWPAAVEIYTSRVLEAVNGTDARLKCTFSSFAPVGDALVTWNFRPLDG
GPEQFVFFYYHIDPFQPMGRFKDRVSWDGNPERYDASILLWKLQFDDNGTYTCQVKNPPDVDGVIGEIRL
SVVHTVRFSEIHFLALAIGSACALMIIIVVVLFQHYRKKRWAERAHKVVEIKSKEEERLNQEKKVS
VEDTD

TRTRPLEQKLISEEDLAANDILDYKDDDDKV

Tag:	C-Myc/DDK
Predicted MW:	21.7 kDa
Concentration:	>0.05 µg/µL as determined by microplate BCA method
Purity:	> 80% as determined by SDS-PAGE and Coomassie blue staining
Buffer:	25 mM Tris-HCl, 100 mM glycine, pH 7.3, 10% glycerol
Preparation:	Recombinant protein was captured through anti-DDK affinity column followed by conventional chromatography steps.
Note:	For testing in cell culture applications, please filter before use. Note that you may experience some loss of protein during the filtration process.
Storage:	Store at -80°C.
Stability:	Stable for 12 months from the date of receipt of the product under proper storage and handling conditions. Avoid repeated freeze-thaw cycles.
RefSeq:	<u>NP_658911</u>
Locus ID:	10205
UniProt ID:	<u>O60487</u> , <u>A0A024R3K1</u>



[View online »](#)

RefSeq Size: 1396

Cytogenetics: 11q23.3

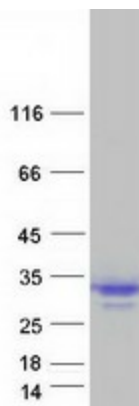
RefSeq ORF: 645

Synonyms: DFNB111; EVA; EVA1

Summary: Thymus development depends on a complex series of interactions between thymocytes and the stromal component of the organ. Epithelial V-like antigen (EVA) is expressed in thymus epithelium and strongly downregulated by thymocyte developmental progression. This gene is expressed in the thymus and in several epithelial structures early in embryogenesis. It is highly homologous to the myelin protein zero and, in thymus-derived epithelial cell lines, is poorly soluble in nonionic detergents, strongly suggesting an association to the cytoskeleton. Its capacity to mediate cell adhesion through a homophilic interaction and its selective regulation by T cell maturation might imply the participation of EVA in the earliest phases of thymus organogenesis. The protein bears a characteristic V-type domain and two potential N-glycosylation sites in the extracellular domain; a putative serine phosphorylation site for casein kinase 2 is also present in the cytoplasmic tail. Two transcript variants encoding the same protein have been found for this gene. [provided by RefSeq, Jul 2008]

Protein Families: Transmembrane

Product images:



Coomassie blue staining of purified MPZL2 protein (Cat# [TP323753]). The protein was produced from HEK293T cells transfected with MPZL2 cDNA clone (Cat# [RC223753]) using MegaTran 2.0 (Cat# [TT210002]).