

## Product datasheet for **TP323747M**

### ARMS2 (NM\_001099667) Human Recombinant Protein

#### Product data:

Product Type:	Recombinant Proteins
Description:	Recombinant protein of human age-related maculopathy susceptibility 2 (ARMS2), nuclear gene encoding mitochondrial protein, 100 µg
Species:	Human
Expression Host:	HEK293T
Expression cDNA Clone or AA Sequence:	>RC223747 representing NM_001099667 <b>Red</b> =Cloning site <b>Green</b> =Tags(s)
	MLRLYPGPMVTEAEGKGGPEMASLSSSVVPSFISTLRESVLDPGVGGEGASDKQRSKLSLSHSMIPAAK IHTELCLPAFFSPAGTQRRFQQPQHHLTLSIIHTAAR
	<b>TR</b> TRPLEQKLISEEDLAANDILDYKDDDDKV
Tag:	C-Myc/DDK
Predicted MW:	11.3 kDa
Concentration:	>0.05 µg/µL as determined by microplate BCA method
Purity:	> 80% as determined by SDS-PAGE and Coomassie blue staining
Buffer:	25 mM Tris-HCl, 100 mM glycine, pH 7.3, 10% glycerol
Preparation:	Recombinant protein was captured through anti-DDK affinity column followed by conventional chromatography steps.
Note:	For testing in cell culture applications, please filter before use. Note that you may experience some loss of protein during the filtration process.
Storage:	Store at -80°C.
Stability:	Stable for 12 months from the date of receipt of the product under proper storage and handling conditions. Avoid repeated freeze-thaw cycles.
RefSeq:	<a href="#">NP_001093137</a>
Locus ID:	387715
UniProt ID:	<a href="#">P0C7Q2</a>
RefSeq Size:	823



[View online »](#)

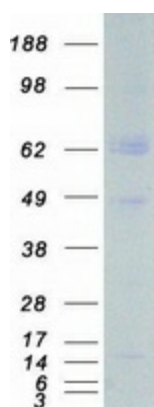
Cytogenetics: 10q26.13

RefSeq ORF: 321

Synonyms: ARMD8

Summary: This gene encodes a small secreted protein specific to primates. This protein is a component of the choroidal extracellular matrix of the eye. Mutations in this gene are associated with age-related macular degeneration. [provided by RefSeq, Sep 2017]

### Product images:



Coomassie blue staining of purified ARMS2 protein (Cat# [TP323747]). The protein was produced from HEK293T cells transfected with ARMS2 cDNA clone (Cat# [RC223747]) using MegaTran 2.0 (Cat# [TT210002]).