

## Product datasheet for **TP323733M**

### **REG3G (NM\_001008387) Human Recombinant Protein**

#### Product data:

**Product Type:** Recombinant Proteins

**Description:** Recombinant protein of human regenerating islet-derived 3 gamma (REG3G), transcript variant 1, 100 µg

**Species:** Human

**Expression Host:** HEK293T

**Expression cDNA Clone or AA Sequence:** >RC223733 protein sequence  
**Red**=Cloning site **Green**=Tags(s)

MLPPMALPSVSWMLLSCLILLCQVQGEETQKELPSPRISCPKGSKAYGSPCYALFLSPKSWMDADLACQK  
RPSGKLVSVLSGAEGSFVSSLVRSISNSYSYIWIGLHDPTQGSEPDGDGWEWSSTDVMNYFAWEKNPSTI  
LNPGHCGSLSRSTGFLKWKDYNCDAKLPYVCKFKD

**TRTRPLEQKLISEEDLAANDILDYKDDDDKV**

**Tag:** C-Myc/DDK

**Predicted MW:** 19.1 kDa

**Concentration:** >0.05 µg/µL as determined by microplate BCA method

**Purity:** > 80% as determined by SDS-PAGE and Coomassie blue staining

**Buffer:** 25 mM Tris-HCl, 100 mM glycine, pH 7.3, 10% glycerol

**Preparation:** Recombinant protein was captured through anti-DDK affinity column followed by conventional chromatography steps.

**Note:** For testing in cell culture applications, please filter before use. Note that you may experience some loss of protein during the filtration process.

**Storage:** Store at -80°C.

**Stability:** Stable for 12 months from the date of receipt of the product under proper storage and handling conditions. Avoid repeated freeze-thaw cycles.

**RefSeq:** [NP\\_001008388](#)

**Locus ID:** 130120

**UniProt ID:** [Q6UW15](#)



[View online »](#)

RefSeq Size: 955

Cytogenetics: 2p12

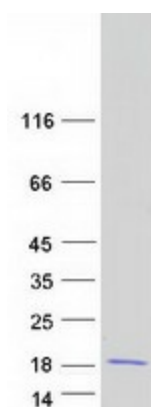
RefSeq ORF: 525

Synonyms: LPPM429; PAP-1B; PAP1B; PAP IB; PAPIB; REG-III; REG III; UNQ429

**Summary:** This gene encodes a member of the regenerating islet-derived genes (REG)3 protein family. These proteins are secreted, C-type lectins with a carbohydrate recognition domain and N-terminal signal peptide. The protein encoded by this gene is an antimicrobial lectin with activity against Gram-positive bacteria. Alternative splicing results in multiple transcript variants encoding multiple isoforms. [provided by RefSeq, Nov 2014]

**Protein Families:** Secreted Protein

### Product images:



Coomassie blue staining of purified REG3G protein (Cat# [TP323733]). The protein was produced from HEK293T cells transfected with REG3G cDNA clone (Cat# [RC223733]) using MegaTran 2.0 (Cat# [TT210002]).