

Product datasheet for **TP323733L**

REG3G (NM_001008387) Human Recombinant Protein

Product data:

Product Type: Recombinant Proteins

Description: Recombinant protein of human regenerating islet-derived 3 gamma (REG3G), transcript variant 1, 1 mg

Species: Human

Expression Host: HEK293T

Expression cDNA Clone or AA Sequence: >RC223733 protein sequence
Red=Cloning site **Green**=Tags(s)

MLPPMALPSVSWMLLSCLILLCQVQGEETQKELPSPRISCPKGSKAYGSPCYALFLSPKSWMDADLACQK
RPSGKLVSVLSGAEGSFVSSLVRSISNSYSYIWIGLHDPTQGSEPDGDGWEWSSTDVMNYFAWEKNPSTI
LNPGHCGSLSRSTGFLKWKDYNCDAKLPYVCKFKD

TRTRPLEQKLISEEDLAANDILDYKDDDDKV

Tag: C-Myc/DDK

Predicted MW: 19.1 kDa

Concentration: >0.05 µg/µL as determined by microplate BCA method

Purity: > 80% as determined by SDS-PAGE and Coomassie blue staining

Buffer: 25 mM Tris-HCl, 100 mM glycine, pH 7.3, 10% glycerol

Preparation: Recombinant protein was captured through anti-DDK affinity column followed by conventional chromatography steps.

Note: For testing in cell culture applications, please filter before use. Note that you may experience some loss of protein during the filtration process.

Storage: Store at -80°C.

Stability: Stable for 12 months from the date of receipt of the product under proper storage and handling conditions. Avoid repeated freeze-thaw cycles.

RefSeq: [NP_001008388](#)

Locus ID: 130120

UniProt ID: [Q6UW15](#)



[View online »](#)

RefSeq Size: 955

Cytogenetics: 2p12

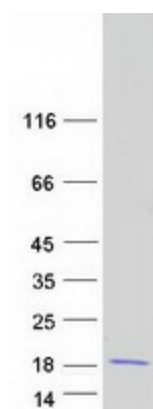
RefSeq ORF: 525

Synonyms: LPPM429; PAP-1B; PAP1B; PAP IB; PAPIB; REG-III; REG III; UNQ429

Summary: This gene encodes a member of the regenerating islet-derived genes (REG)3 protein family. These proteins are secreted, C-type lectins with a carbohydrate recognition domain and N-terminal signal peptide. The protein encoded by this gene is an antimicrobial lectin with activity against Gram-positive bacteria. Alternative splicing results in multiple transcript variants encoding multiple isoforms. [provided by RefSeq, Nov 2014]

Protein Families: Secreted Protein

Product images:



Coomassie blue staining of purified REG3G protein (Cat# [TP323733]). The protein was produced from HEK293T cells transfected with REG3G cDNA clone (Cat# [RC223733]) using MegaTran 2.0 (Cat# [TT210002]).