

## Product datasheet for TP323721L

### Casein (CSN1S1) (NM\_001890) Human Recombinant Protein

#### Product data:

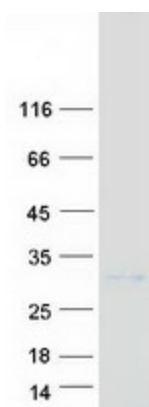
Product Type:	Recombinant Proteins
Description:	Recombinant protein of human casein alpha s1 (CSN1S1), transcript variant 1, 1 mg
Species:	Human
Expression Host:	HEK293T
Expression cDNA Clone or AA Sequence:	>RC223721 protein sequence Red=Cloning site Green=Tags(s)
	MRLLIILTCLVAVALARPKLPLRYPERLQNPSESSEPIPLESREEYMNGMNRQRNIREKQTDEIKDTRNE STQNCVVAEPEKMESSISSSEEMSLSKCAEQFCRLNEYNQLQLQAAHAQEIQIRRMNENSHVQVVPFQQLN QLAAYPYAVWYYPQIMQYVFPFSDISNPTAHENYEKNNVMLQW
	TRTRPLEQKLISEEDLAANDILDYKDDDDKV
Tag:	C-Myc/DDK
Predicted MW:	20 kDa
Concentration:	>0.05 µg/µL as determined by microplate BCA method
Purity:	> 80% as determined by SDS-PAGE and Coomassie blue staining
Buffer:	25 mM Tris-HCl, 100 mM glycine, pH 7.3, 10% glycerol
Preparation:	Recombinant protein was captured through anti-DDK affinity column followed by conventional chromatography steps.
Note:	For testing in cell culture applications, please filter before use. Note that you may experience some loss of protein during the filtration process.
Storage:	Store at -80°C.
Stability:	Stable for 12 months from the date of receipt of the product under proper storage and handling conditions. Avoid repeated freeze-thaw cycles.
RefSeq:	<u><a href="#">NP_001881</a></u>
Locus ID:	1446
UniProt ID:	<u><a href="#">P47710</a></u>
RefSeq Size:	981



[View online »](#)

Cytogenetics:	4q13.3
RefSeq ORF:	555
Synonyms:	CASA; CSN1
Summary:	Important role in the capacity of milk to transport calcium phosphate.[UniProtKB/Swiss-Prot Function]
Protein Families:	Secreted Protein

### Product images:



Coomassie blue staining of purified CSN1S1 protein (Cat# [TP323721]). The protein was produced from HEK293T cells transfected with CSN1S1 cDNA clone (Cat# [RC223721]) using MegaTran 2.0 (Cat# [TT210002]).